

SUPPLEMENTAL INFORMATION

**DO NEWTS AT CRATER LAKE REPRESENT A DISTINCTLY EVOLVING
POPULATION OF ROUGH-SKINNED NEWTS?**

ANDREW M. RAY, STEPHEN F. SPEAR, SCOTT F. GIRDNER, MARK W. BUKTENICA, DAVID K.

HERING, JACK D. TORRESDAL, MICHAEL S. PARKER, AND LISETTE P. WAITS

The following material is provided by the authors and was not edited by *Herpetological Conservation and Biology*.

TABLE S1. A summary of the latitude, longitude, elevation, and counties for all sample locations sampling locations occurring inside and outside of Crater Lake National Park. All locations were located in Zone 10T and are based on WGS84 datum.

Location	Abbreviation	Latitude (decimal degrees)	Longitude (decimal degrees)	Elevation (m)	County in Oregon
Skell Channel	SC	42.944113	-122.160831		
Crater Lake near Phantom Ship	PS	42.910329	-122.0902518	1883	Klamath
Lady of the Lake	LL	42.94706	-122.0566131	1883	Klamath
Devils Backbone	DB	42.952331	-122.1577119	1883	Klamath
Eagle Point	EP	42.913104	-122.1218825	1883	Klamath
	MP	42.960944	-122.1483342		
Meriam Point				1883	Klamath
Spruce Lake	SL	42.979146	-122.2965179	1447	Jackson
Lily Pond	LP	42.986133	-122.2607711	1583	Klamath
Crater Crk E Pond	CCEP	42.98787	-122.2620137	1572	Klamath
Lake in the Woods	LW	43.216722	-122.7239457	924	Douglas
Red Blanket Creek	RBC	42.801848	-122.2688879	1210	Klamath
South Lake	SLSL	42.649081	-122.2212356	2036	Klamath
Xanterra Pond	XP	42.858949	-122.157602	1820	Klamath
Waldo Lake	WL	43.691952	-122.0435665	1653	Lane
Camp Emerald Forest	CEF	45.90701944	-123.0163111	379	Columbia
Coffenbury Lake	CFB	46.170625	-123.966575	9	Clatsop
Chamberlain Lake	CMBL	45.31166667	-123.9615694	26	Tillamook
Lake Lytle	LKLT	45.62797222	-123.9415278	4	Tillamook
Lake Tilikum	TKM	45.34433056	-123.0880528	76	Yamhill

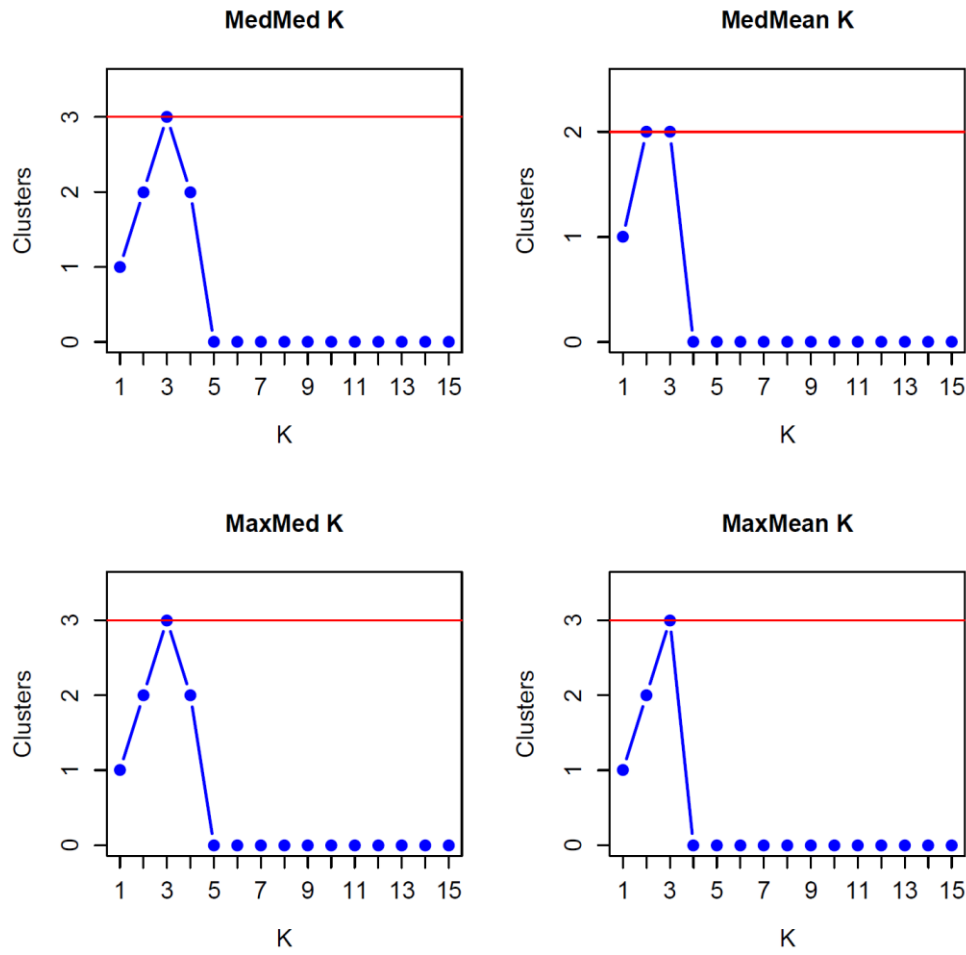


FIGURE S1. Selection of best supported value of K based on mean and median membership across Rough-skinned Newts sampled across Oregon both within and outside the Crater Lake caldera. MedMedK represents the median of medians, MedMeanK represents the median of means, MaxMedK represents the maximum of medians and MaxMeanK represents the maximum of means (see Puechmaille 2016 for details).

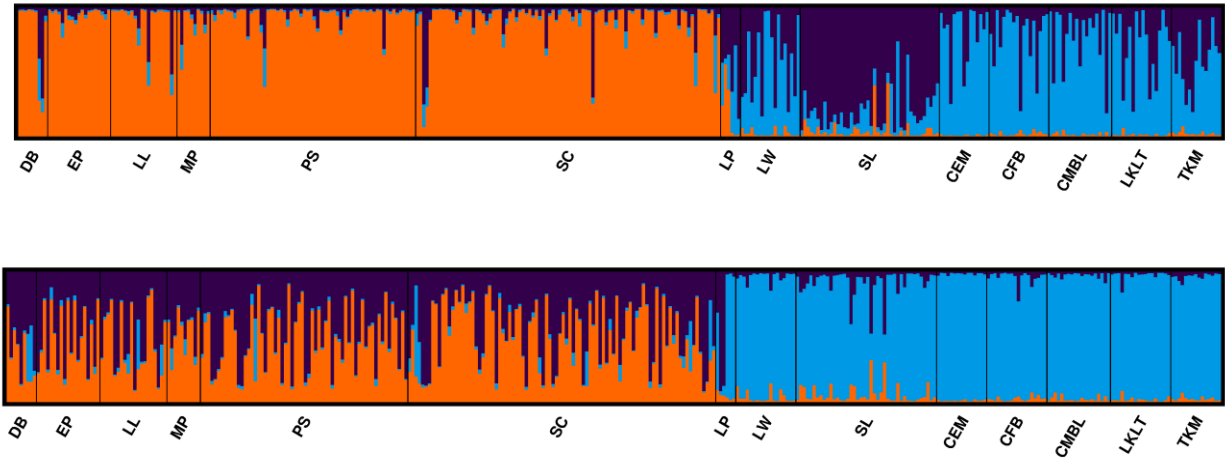


FIGURE S2. STRUCTURE bar plots across all sampled populations of Rough-skinned Newts both within and outside the Crater Lake caldera assuming $K = 3$. Top graph depicts the major clustering, represented by 13/20 replicates. Bottom panel represents the minor cluster, represented by 7/20 replicates. Site abbreviations are as in the main text

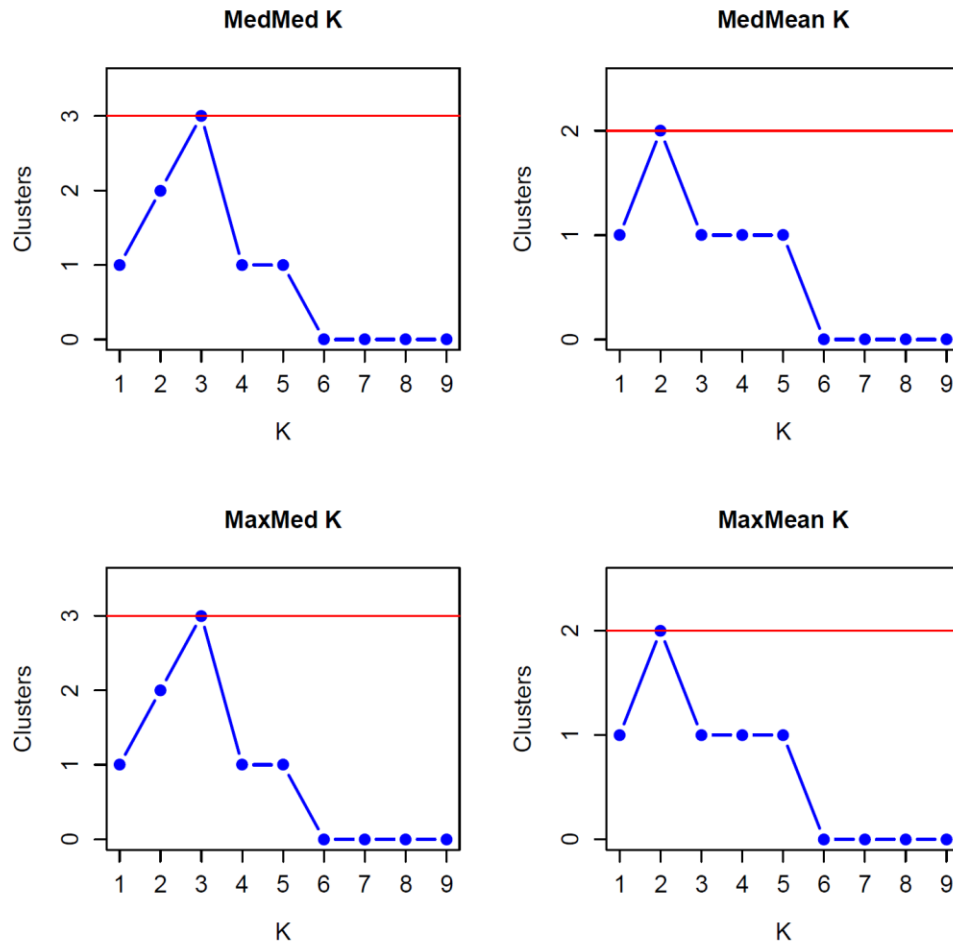


FIGURE S3. Selection of best supported value of K based on mean and median membership across Rough-skinned Newts sampled across Oregon for individuals outside the Crater Lake caldera and one caldera population (SC). See main text for details regarding hierarchical clustering strategy. MedMedK represents the median of medians, MedMeanK represents the median of means, MaxMedK represents the maximum of medians and MaxMeanK represents the maximum of means (see Puechmaille 2016 for details).

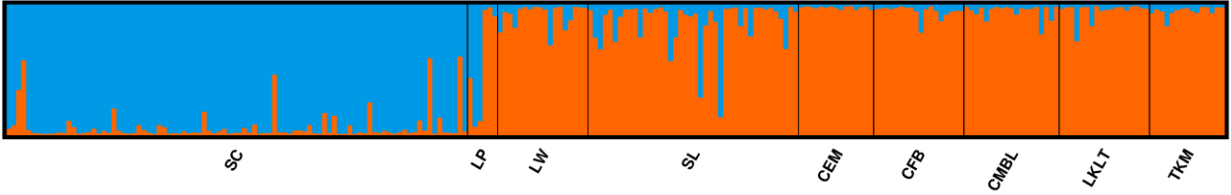


FIGURE S4. STRUCTURE bar plots across sampled populations of Rough-skinned Newts outside the Crater Lake caldera and one caldera site (SC) assuming $K = 2$. Site abbreviations are as in the main text.

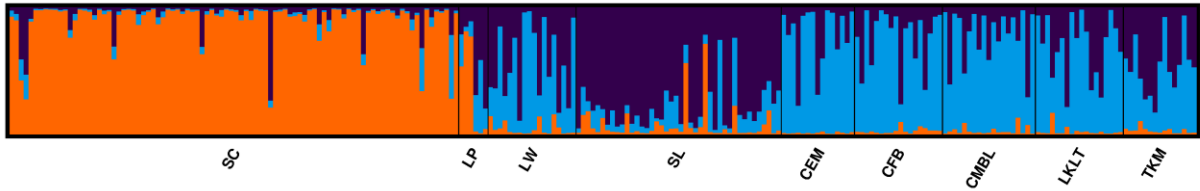


FIGURE S5. STRUCTURE bar plots across sampled populations of Rough-skinned Newts outside the Crater Lake caldera and one caldera site (SC) assuming $K = 3$. Site abbreviations are as in the main text.

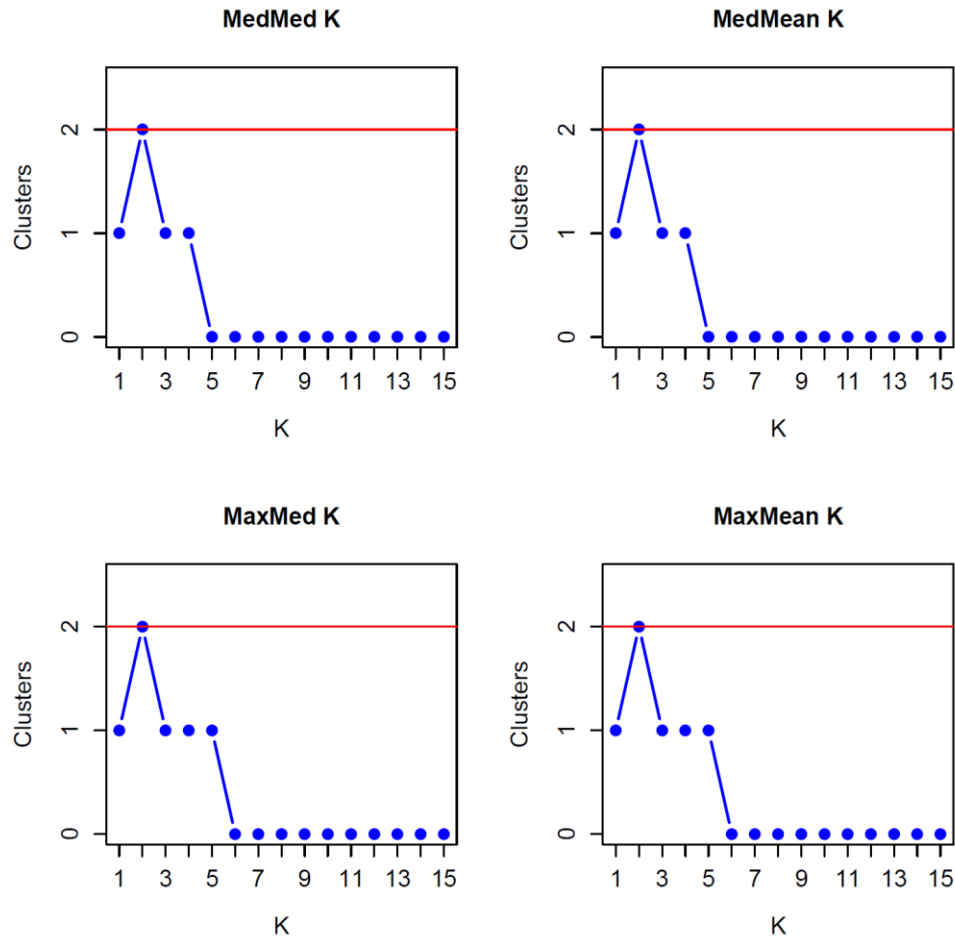


FIGURE S6. Selection of best supported value of K based on mean and median membership across Rough-skinned Newts sampled across Oregon both within and outside the Crater Lake caldera for subsample set 1. See main text for details regarding subsampling strategy.

MedMedK represents the median of medians, MedMeanK represents the median of means, MaxMedK represents the maximum of medians and MaxMeanK represents the maximum of means (see Puechmaille 2016 for details).

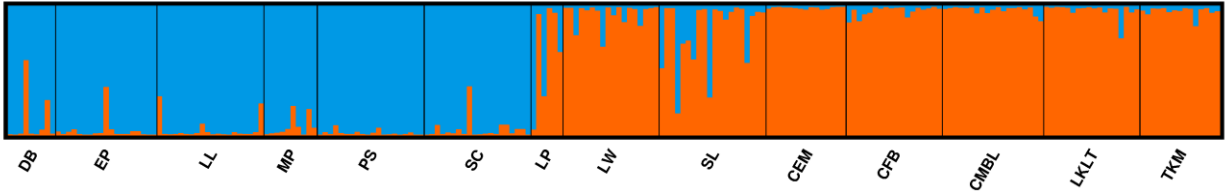


FIGURE S7. STRUCTURE bar plots across all sampled populations of Rough-skinned Newts both within and outside the Crater Lake caldera for subsample set 1 assuming $K = 2$. See main text for details regarding subsampling strategy. Site abbreviations are as in the main text.

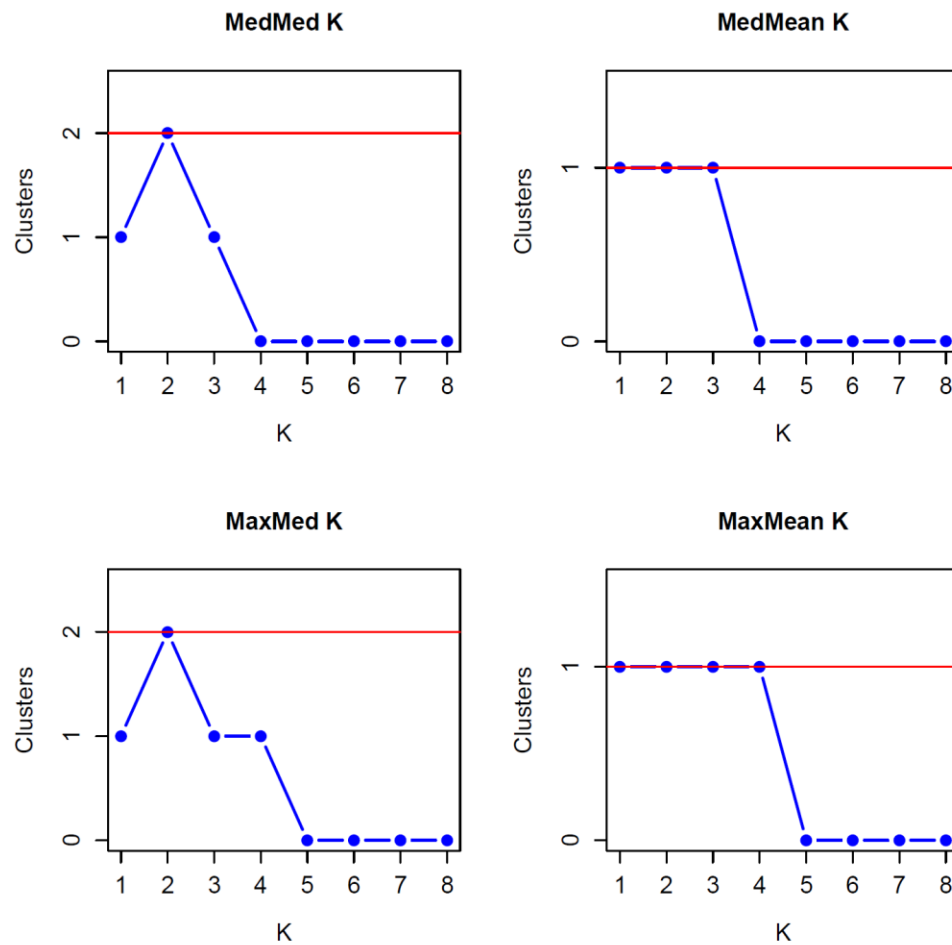


FIGURE S8. Selection of best supported value of K based on mean and median membership across Rough-skinned Newts sampled within the Crater Lake caldera and outside sites LP and SL for subsample set 1. See main text for details regarding subsampling and hierarchical strategy. MedMedK represents the median of medians, MedMeanK represents the median of means, MaxMedK represents the maximum of medians and MaxMeanK represents the maximum of means (see Puechmaille 2016 for details).

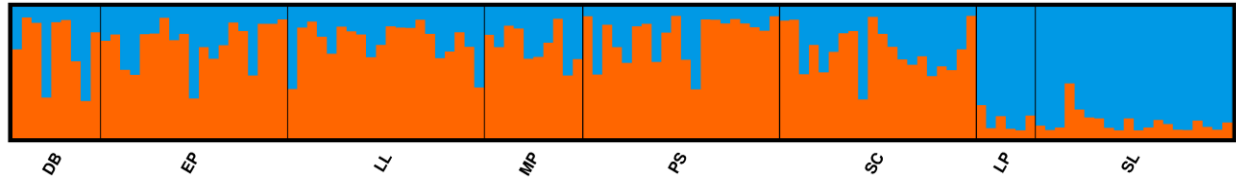


FIGURE S9. STRUCTURE bar plots across all sampled populations of Rough-skinned Newts sampled within the Crater Lake caldera and outside sites LP and SL for subsample set 1. See main text for details regarding subsampling and hierarchical strategy. Site abbreviations are as in the main text.

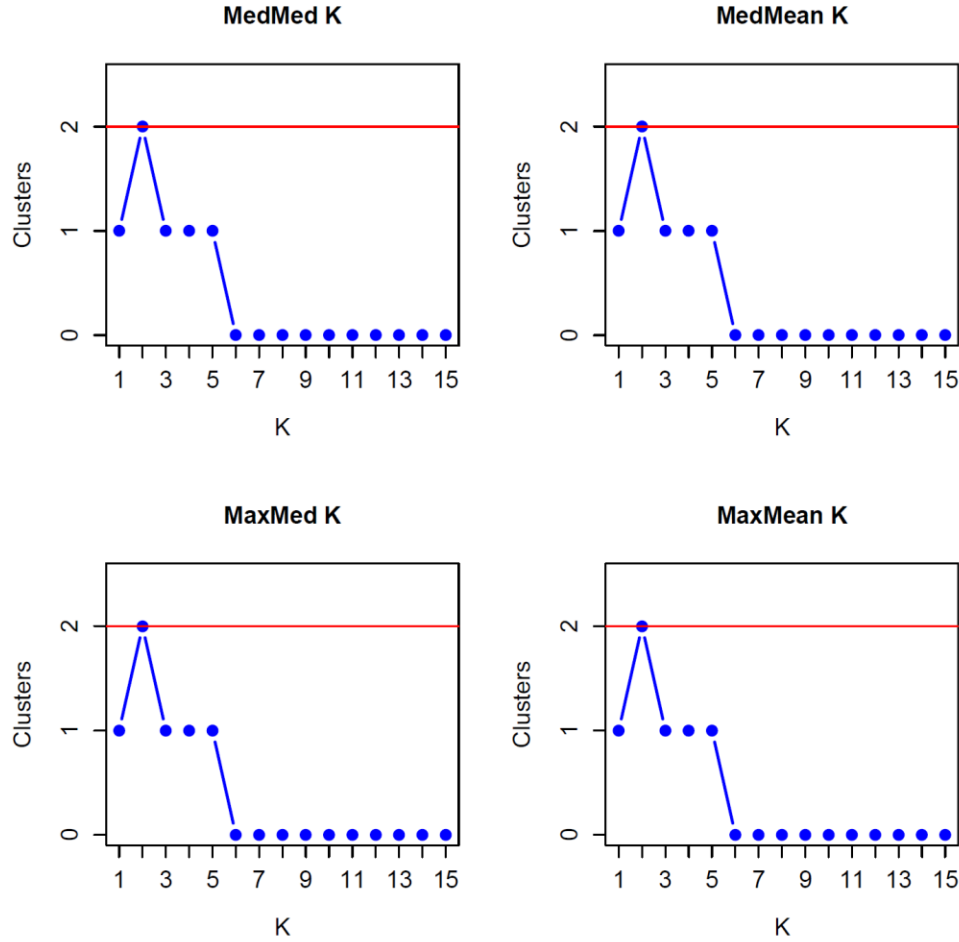


FIGURE S10. Selection of best supported value of K based on mean and median membership across Rough-skinned Newts sampled across Oregon both within and outside the Crater Lake caldera for subsample set 2. See main text for details regarding subsampling strategy.

MedMedK represents the median of medians, MedMeanK represents the median of means, MaxMedK represents the maximum of medians and MaxMeanK represents the maximum of means (see Puechmaille 2016 for details).

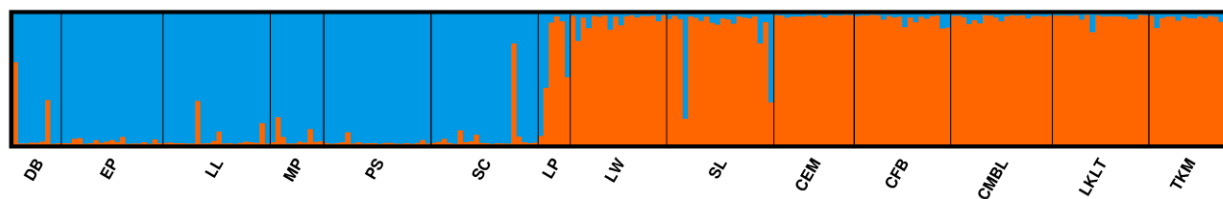


FIGURE S11. STRUCTURE bar plots across all sampled populations of Rough-skinned Newts both within and outside the Crater Lake caldera for subsample set 2 assuming $K = 2$. See main text for details regarding subsampling strategy. Site abbreviations are as in the main text.

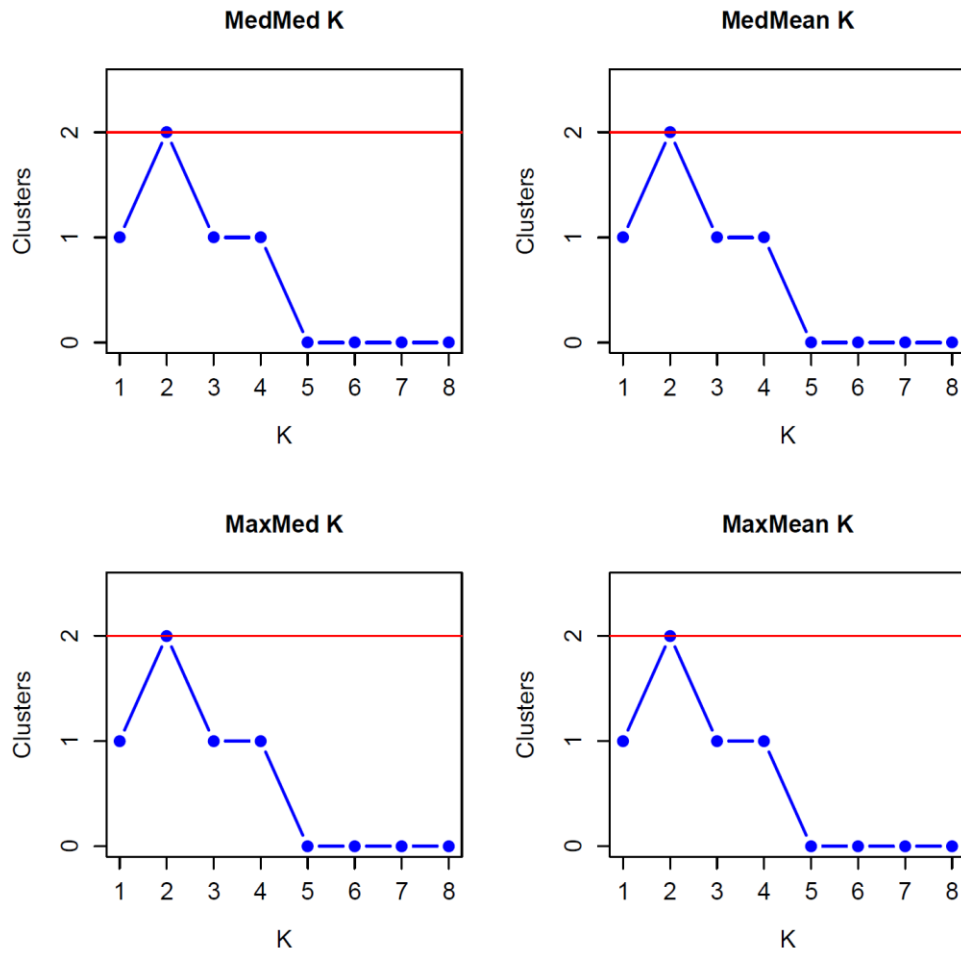


FIGURE S12. Selection of best supported value of K based on mean and median membership across Rough-skinned Newts sampled within the Crater Lake caldera and outside sites LP and SL for subsample set 2. See main text for details regarding subsampling and hierarchical strategy. MedMedK represents the median of medians, MedMeanK represents the median of means, MaxMedK represents the maximum of medians and MaxMeanK represents the maximum of means (see Puechmaille 2016 for details).

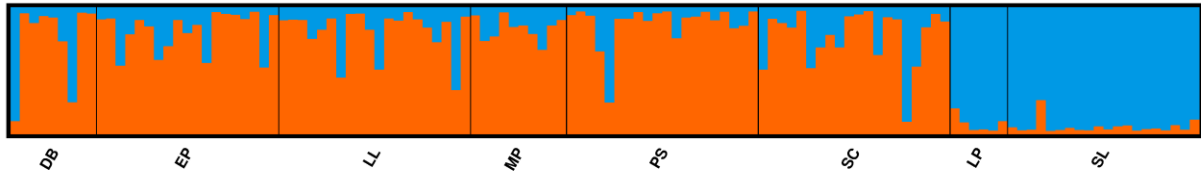


FIGURE S13. STRUCTURE bar plots across all sampled populations of Rough-skinned Newts sampled within the Crater Lake caldera and outside sites LP and SL for subsample set 2. See main text for details regarding subsampling and hierarchical strategy. Site abbreviations are as in the main text.

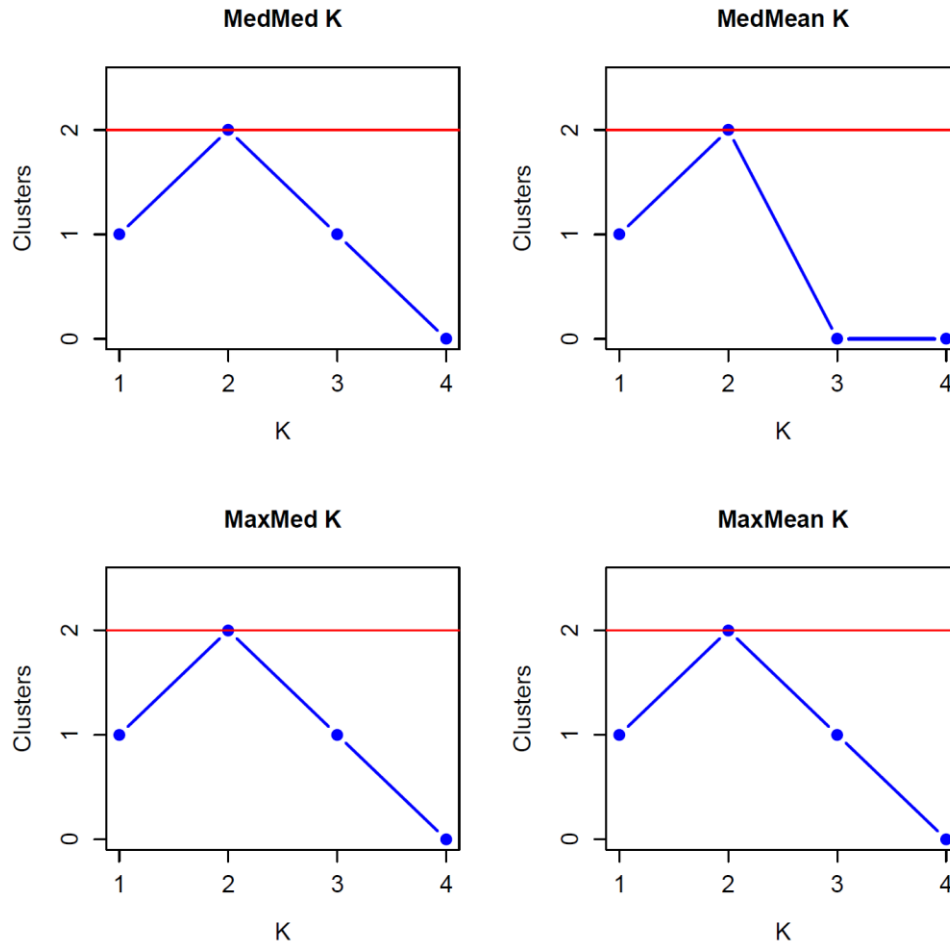


FIGURE S14. Selection of best supported value of K based on mean and median membership across Rough-skinned Newts sampled at sites DB, SC (caldera) and sites LP, SL (outside) for subsample set 2. See main text for details regarding subsampling and hierarchical strategy. MedMedK represents the median of medians, MedMeanK represents the median of means, MaxMedK represents the maximum of medians and MaxMeanK represents the maximum of means (see Puechmaille 2016 for details).



FIGURE S15. STRUCTURE bar plots across all sampled populations of Rough-skinned Newts sampled at sites DB, SC (caldera) and sites LP, SL (outside) for subsample set 2. See main text for details regarding subsampling and hierarchical strategy. Site abbreviations are as in the main text.

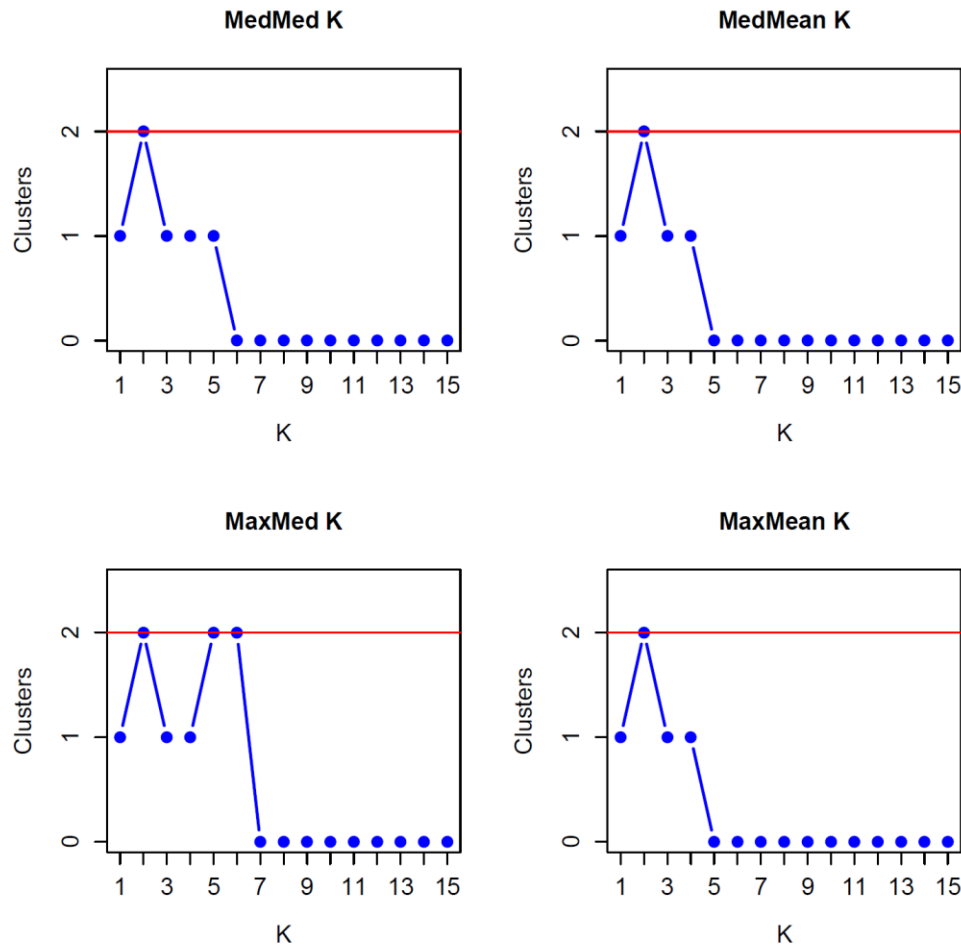


FIGURE S16. Selection of best supported value of K based on mean and median membership across Rough-skinned Newts sampled across Oregon both within and outside the Crater Lake caldera for subsample set 3. See main text for details regarding subsampling strategy.

MedMedK represents the median of medians, MedMeanK represents the median of means, MaxMedK represents the maximum of medians and MaxMeanK represents the maximum of means (see Puechmaille 2016 for details).

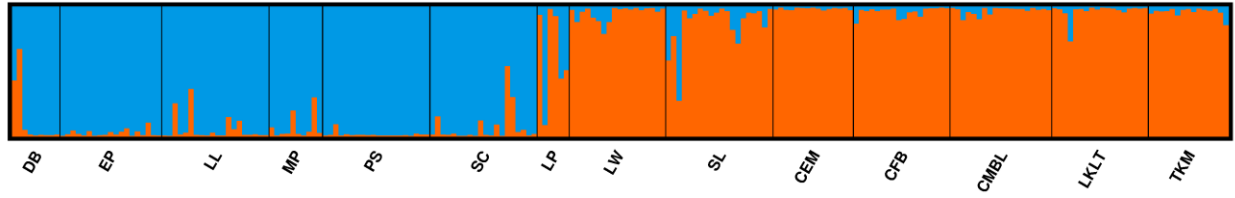


FIGURE S17. STRUCTURE bar plots across all sampled populations of Rough-skinned Newts both within and outside the Crater Lake caldera for subsample set 3 assuming $K = 2$. See main text for details regarding subsampling strategy. Site abbreviations are as in the main text.

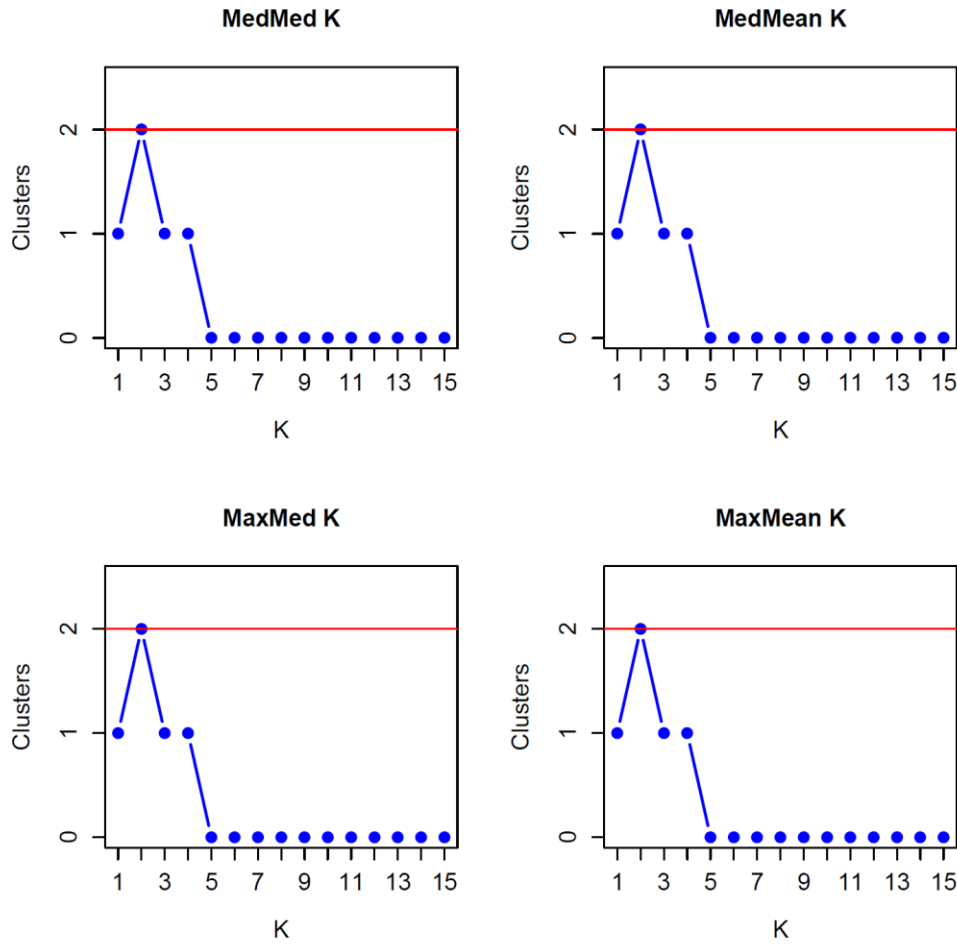


FIGURE S18. Selection of best supported value of K based on mean and median membership across Rough-skinned Newts sampled across Oregon both within and outside the Crater Lake caldera for subsample set 4. See main text for details regarding subsampling strategy.

MedMedK represents the median of medians, MedMeanK represents the median of means, MaxMedK represents the maximum of medians and MaxMeanK represents the maximum of means (see Puechmaille 2016 for details).

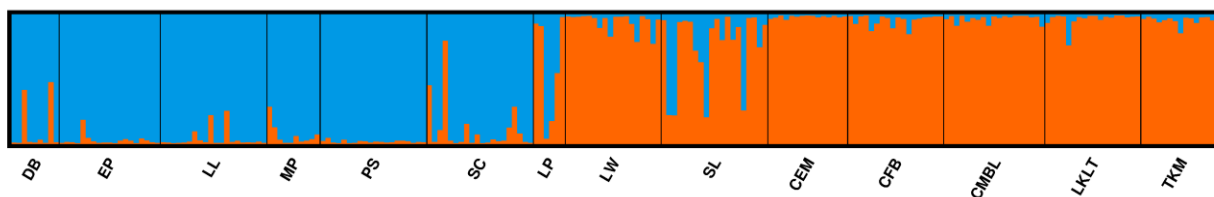


FIGURE S19. STRUCTURE bar plots across all sampled populations of Rough-skinned Newts both within and outside the Crater Lake caldera for subsample set 4 assuming $K = 2$. See main text for details regarding subsampling strategy. Site abbreviations are as in the main text.

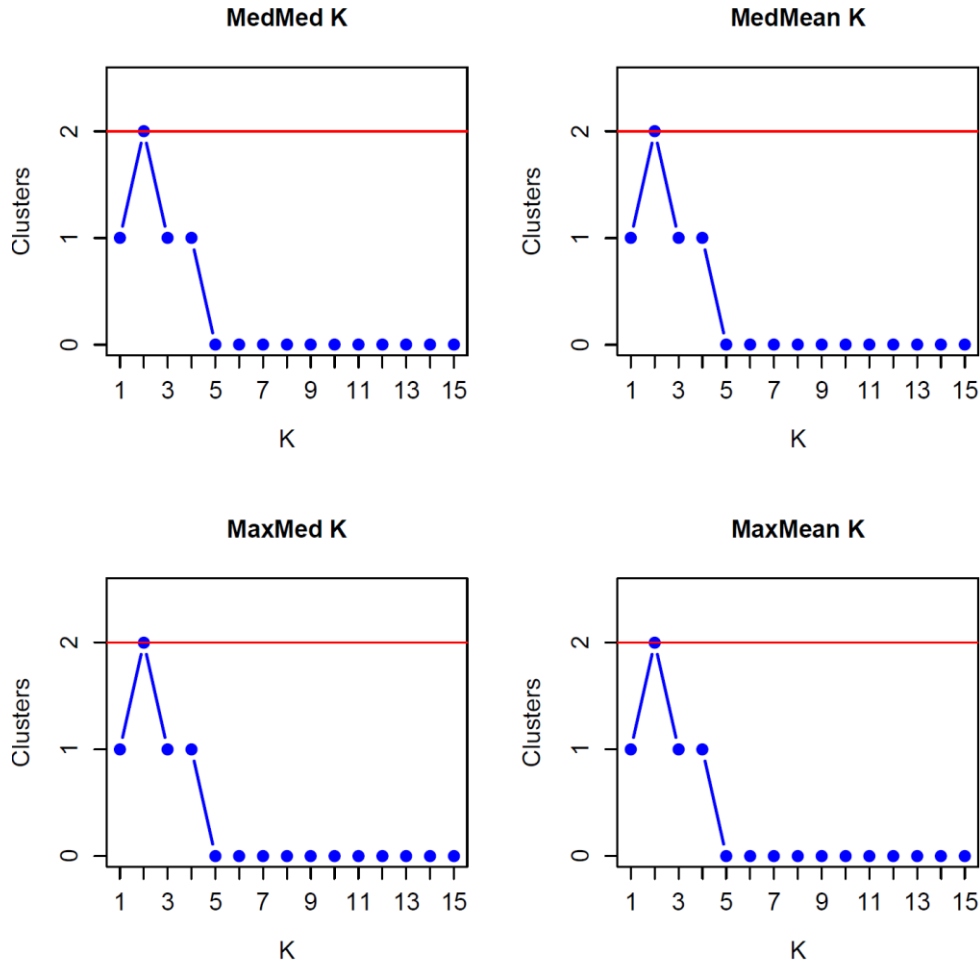


FIGURE S20. Selection of best supported value of K based on mean and median membership across Rough-skinned Newts sampled across Oregon both within and outside the Crater Lake caldera for subsample set 5. See main text for details regarding subsampling strategy.

MedMedK represents the median of medians, MedMeanK represents the median of means, MaxMedK represents the maximum of medians and MaxMeanK represents the maximum of means (see Puechmaille 2016 for details).

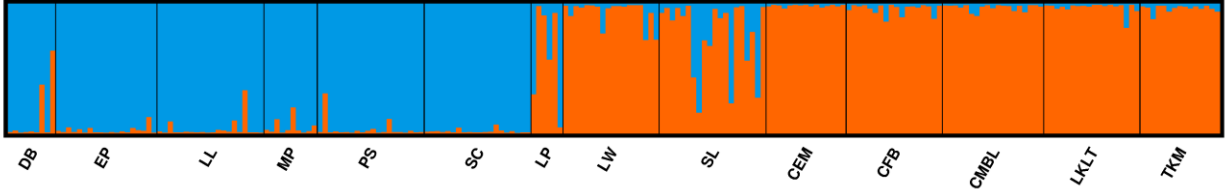


FIGURE S21. STRUCTURE bar plots across all sampled populations of Rough-skinned Newts both within and outside the Crater Lake caldera for subsample set 5 assuming $K = 2$. See main text for details regarding subsampling strategy. Site abbreviations are as in the main text.

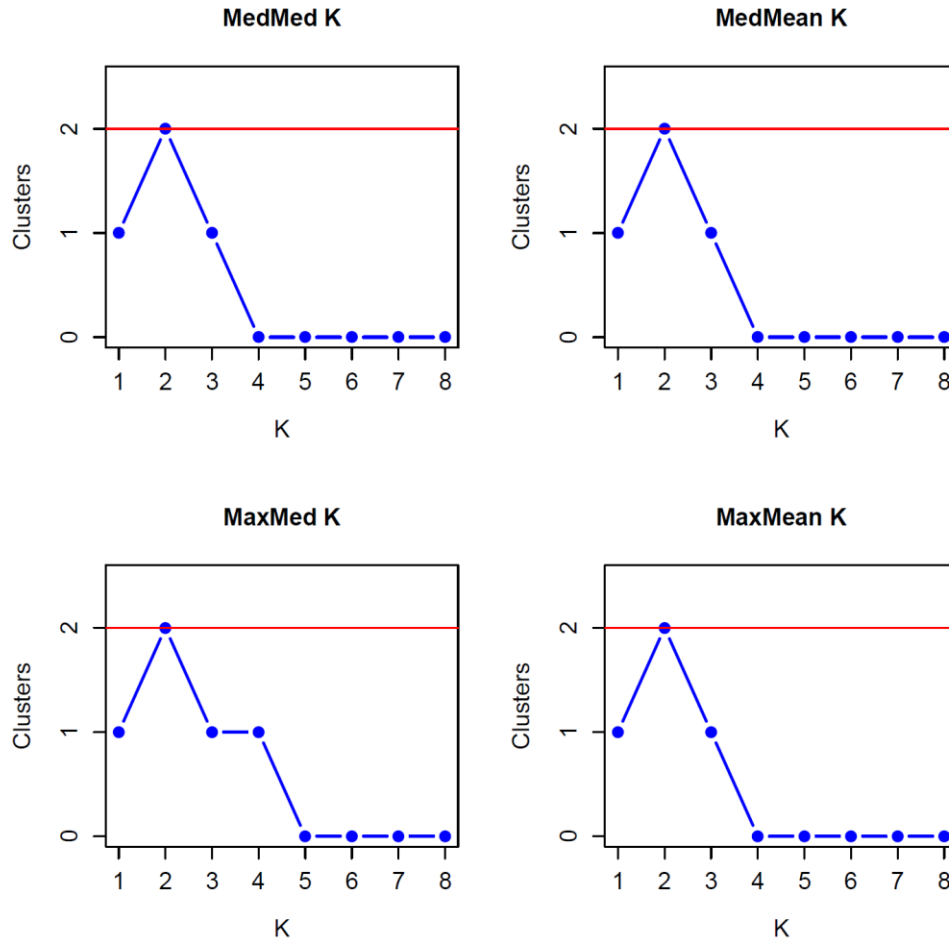


FIGURE S22. Selection of best supported value of K based on mean and median membership across Rough-skinned Newts sampled within the Crater Lake caldera and outside sites LP and SL for subsample set 5. See main text for details regarding subsampling and hierarchical strategy. MedMedK represents the median of medians, MedMeanK represents the median of means, MaxMedK represents the maximum of medians and MaxMeanK represents the maximum of means (see Puechmaille 2016 for details).

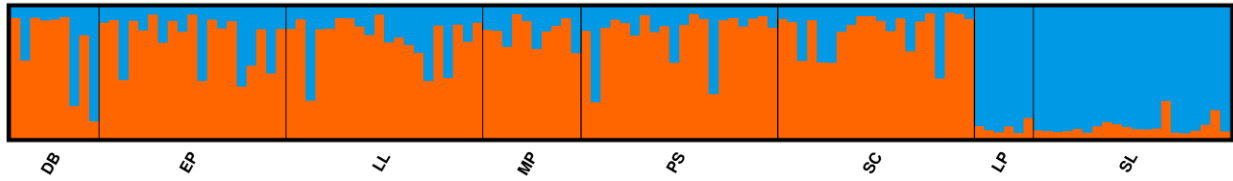


FIGURE S23. STRUCTURE bar plots across all sampled populations of Rough-skinned Newts sampled within the Crater Lake caldera and outside sites LP and SL for subsample set 5. See main text for details regarding subsampling and hierarchical strategy. Site abbreviations are as in the main text.