

SUPPLEMENTAL INFORMATION

**A 10-YEAR STUDY OF NORTHERN LEOPARD FROG (*RANA PIPIENS*)
REPRODUCTION IN EAST-CENTRAL NEVADA, USA**

*AARON M. AMBOS, RAYMOND A. SAUMURE, AUDREY R. BENNETT, SIGNA L. GUNDLACH,
NANCY A. BEECHER, AND ZANE L. MARSHALL*

The following material is provided by the authors and was not subjected to review or editing by *Herpetological Conservation and Biology*.

Table S1. Number of Northern Leopard Frog (*Rana pipiens*) egg masses documented during 2009–2018 at research sites in Spring Valley, White Pine County, Nevada, USA. A hyphen indicates the site was not surveyed, whereas a value of zero indicates the habitat was surveyed but no egg masses were detected.

Site Names		Egg Mass Numbers										Total
		2009	2010	2011	2012	2013	2014	2015	2016	2017	2018	
Keegan Spring Complex North	Site	34	70	162	416	59	39	7	65	36	30	918
	Auxiliary Site	-	-	38	364	6	3	0	16	9	7	443
Minerva Spring Complex Middle	Site	-	-	-	-	-	-	44	30	16	38	128
Minerva Spring Complex North	Site	0	7	3	36	23	0	7	0	3	3	82
	Auxiliary Site	-	-	-	-	-	-	-	3	0	1	4
Shoshone Ponds	Site	1	0	8	8	3	0	-	-	4	19	43
Unnamed 5 Spring	Site	9	13	16	46	69	67	49	0	0	0	269
	Auxiliary Site	2	-	5	14	17	-	5	0	0	0	43
West Spring Valley Complex	Site	1	0	12	-	119	67	48	11	2	1	261

TABLE S2. Annual variability in Northern Leopard Frog (*Rana pipiens*) egg mass numbers during 2009–2018 at research sites in Spring Valley, White Pine County, Nevada, USA. Abbreviation SD = standard deviation.

	Surveyed (y)	n	Mean	SD	Range
Keegan Spring Complex North	10	918	91.8	115.1	7–416
Minerva Spring Complex Middle	4	128	32.0	10.5	16–44
Minerva Spring Complex North	10	82	8.2	11.3	0–36
Shoshone Ponds	8	43	5.4	6.0	0–19
Unnamed 5 Spring	10	269	26.9	26.5	0–69
West Spring Valley Complex 1	9	261	29.0	38.9	0–119

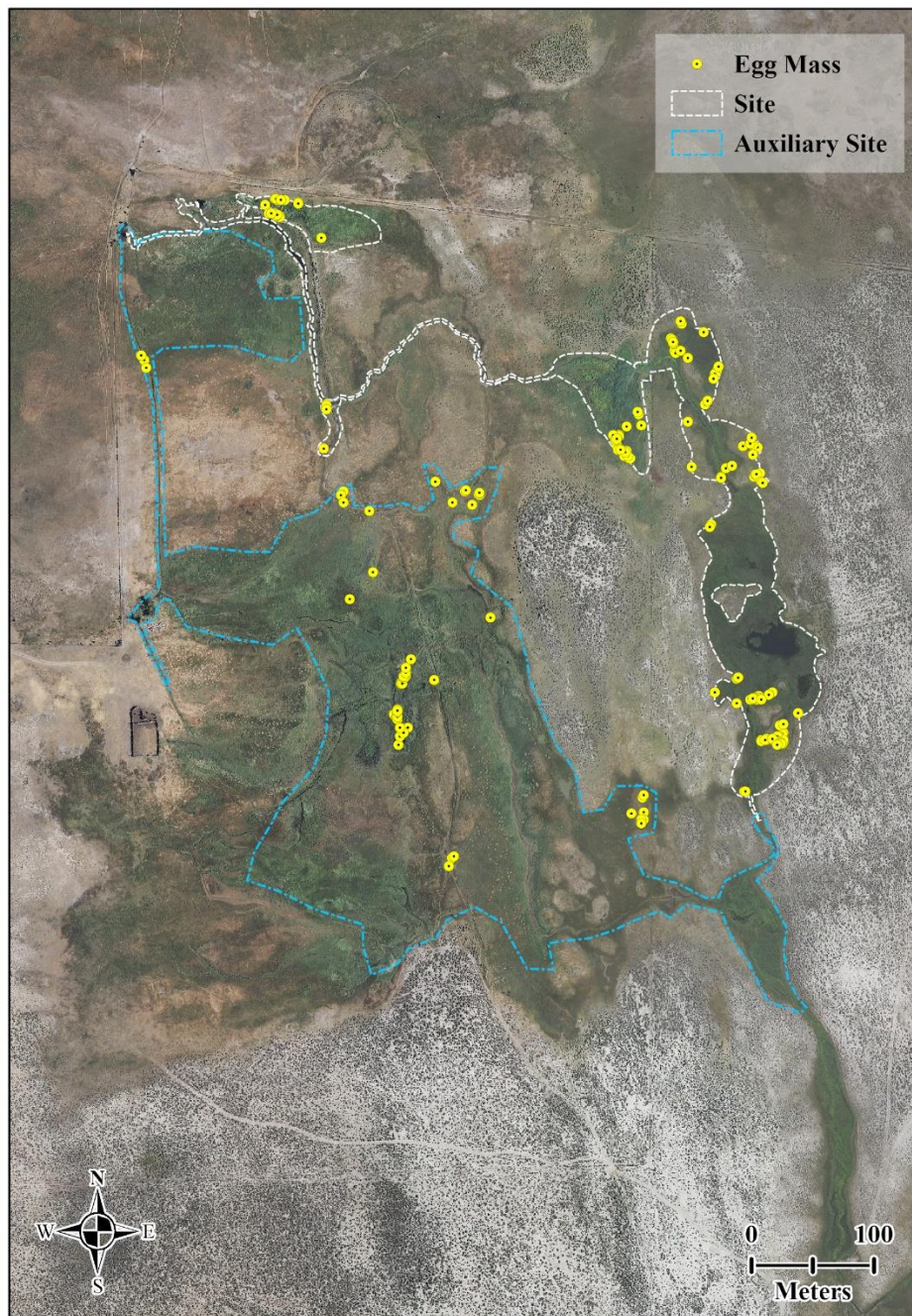


Figure S1. Northern Leopard Frog (*Rana pipiens*) egg mass deposition sites from 2009–2018 at the Keegan Spring Complex North, Spring Valley, White Pine County, Nevada, USA.



Figure S2. Northern Leopard Frog (*Rana pipiens*) egg mass deposition sites from 2015–2018 at Minerva Spring Complex Middle, Spring Valley, White Pine County, Nevada, USA.



Figure S3. Northern Leopard Frog (*Rana pipiens*) egg mass deposition sites from 2009–2018 at Minerva Spring Complex North, Spring Valley, White Pine County, Nevada, USA.



Figure S4. Northern Leopard Frog (*Rana pipiens*) egg mass deposition sites from 2009–2018 at Shoshone Ponds, Spring Valley, White Pine County, Nevada, USA.



Figure S5. Northern Leopard Frog (*Rana pipiens*) site at South Millick, Spring Valley, White Pine County, Nevada, USA. No egg masses documented.

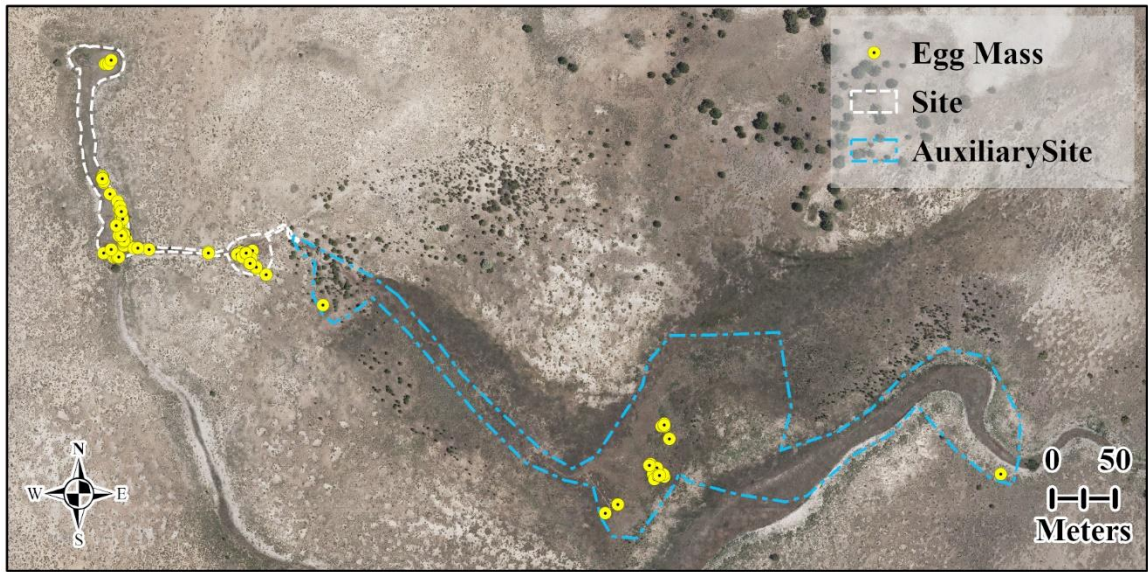


Figure S6. Northern Leopard Frog (*Rana pipiens*) egg mass deposition sites from 2009–2018 at Unnamed 5 Spring, Spring Valley, White Pine County, Nevada, USA.

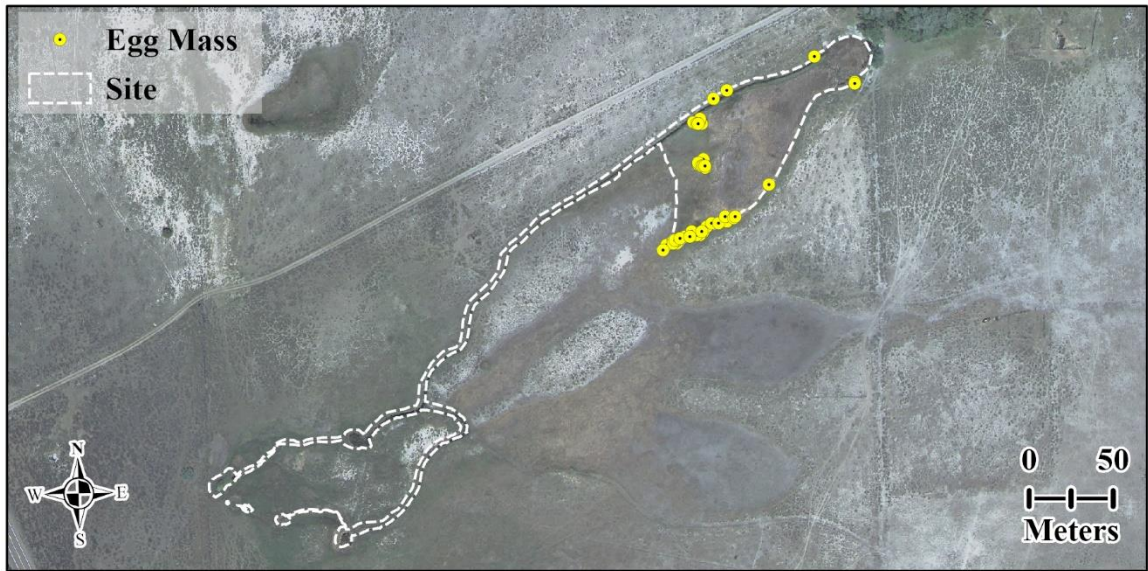


Figure S7. Northern Leopard Frog (*Rana pipiens*) egg mass deposition sites from 2009–2018 at West Spring Valley Complex 1, Spring Valley, White Pine County, Nevada, USA.