

SUPPLEMENTAL INFORMATION

**A TRANSBOUNDARY TERRESTRIAL HERPETOLOGICAL SURVEY
FOR THE MAPUTO NATIONAL PARK-TEMBE ELEPHANT
PARK COMPLEX OF THE LUBOMBO TRANSFRONTIER
CONSERVATION AREA, MOZAMBIQUE AND SOUTH AFRICA**

PHILIP R. JORDAAN, CATHARINÉ C. HANEKOM, AND MIGUEL GONÇALVES

The following material is provided by the authors and was not subjected to peer review or editing by *Herpetological Conservation and Biology*.

Table S1. Trap site descriptions for the 2019/2020 Maputo National Park-Tembe Elephant Park herpetological surveys. CDF= Coastal Dune Forest; CG= Coastal Grassland; CW= Closed Woodland; EP= *Eucalyptus* Plantations; OW= Open Woodland; SF= Sand Forest; ST=Sand Thicket; SW= Sparse Woodland; WG= Woody Grassland

GENERAL HABITAT	TRAP SITE	COORDINATES	DESCRIPTION
MAPUTO NATIONAL PARK			
GRASSLAND	MNP CG A	-26.43589 S, 32.90868 E	In depression on top of dune between a homestead and coastal dune forest. Tall grassland.
	MNP CG B	-26.42634 S, 32.91796 E	In tall <i>Hyperthelia dissoluta</i> grassland close to coastal dune forest.
	MNP CG C	-26.43685 S, 32.91791 E	Short grassland with high rates of woody encroachment along a slope in view of the ocean.
	MNP CG D	-26.44765 S, 32.91566 E	On top of a tall dune with some woody encroachment present.
	MNP WG A	-26.39905 S, 32.82941 E	Unburnt grassland with sparse woody cover along a slope.
	MNP WG B	-26.42322 S, 32.84897 E	Short grassland among several <i>Garcinia livingstonei</i> trees on a level plain, burnt winter 2019.
	MNP WG C	-26.46781 S, 32.83460 E	Short grassland on top of a small dune, on the edge of a thicket, burnt winter 2019.
	MNP WG D	-26.49886 S, 32.83718 E	Short grassland at bottom of dune close to Lake Nela, burnt winter 2019.
SAVANNA	MNP ST A	-26.46018 S, 32.78437 E	Bottom of dune under a <i>Sclerocarya birrea</i> tree.
	MNP ST B	-26.43931 S, 32.77604 E	On top of dune with scattered woody cover.
	MNP ST C	-26.46115 S, 32.74177 E	Between sand forest and a wetland along a slope with scattered woody cover.
	MNP ST D	-26.49098 S, 32.72941 E	Under a large tree with woody understory.

FOREST	MNP SF A	-26.38749 S, 32.82490 E	Tall Sand Forest close to Lake Max with dense leaf litter, and a completely closed canopy.
	MNP SF B	-26.39826 S, 32.77490 E	Dense tall Sand Forest with no understory and a dense detrital layer next to wetland.
	MNP SF C	-26.47020 S, 32.75811 E	Short Sand Forest along a slope with thick layer of leaf litter in a large forest patch.
	MNP SF D	-26.48435 S, 32.73880 E	Along a slope with moderate amount of leaf litter with short Sand Forest.
	MNP SF E	-26.40185 S, 32.90970 E	Close to Lake Umalati in closed canopy Sand Forest with a moderate detrital layer.
	MNP SF F	-26.40595 S, 32.87870 E	North of Lake Munde in dense Sand Forest with a high number of vines and a dense understory.
	MNP CDF A	-26.38542 S, 32.91972 E	Bottom of the dune in Coastal Dune Forest under a partial canopy with a moderate detrital layer.
	MNP CDF B	-26.37930 S, 32.92098 E	Edge of Coastal Dune Forest with a high density of <i>Vechallia</i> trees and a moderate understory.
	MNP CDF C	-26.42606 S, 32.91901 E	Observable elephant damage, partial canopy with moderate detrital cover, close to beach.
	MNP CDF D	-26.46127 S, 32.91353 E	Complete canopy in tall forest with high levels of detrital cover but a lack of an understory.
MODIFIED	MNP EP A	-26.50857 S, 32.71946 E	Cleared <i>Eucalyptus</i> plantation with scattered detrital layers and grass cover.
	MNP EP B	-26.50991 S, 32.71775 E	Cleared <i>Eucalyptus</i> plantation with <i>Sclerocroton gratissimum</i> shrub re-establishment and a <i>Cynodon dactylon</i> dense grass layer.

	MNP EP C	-26.54124 S, 32.72503 E	Derelict <i>Eucalyptus</i> plantation with a moderate scattered detrital layer, sparse canopy cover, and moderate densities of indigenous trees.
	MNP EP D	-26.54486 S, 32.72618 E	Derelict <i>Eucalyptus</i> plantation with moderate detrital layer, sparse canopy cover, with high densities of indigenous trees and <i>Loudetia simplex</i> grass layer.
TEMBE ELEPHANT PARK			
SAVANNA	TEP OW A	-26.86639 S, 32.53017 E	Top of dune close to international border with tall grass and scattered woody thickets.
	TEP OW B	-26.88216 S, 32.49154 E	Along slope with tall grasses between bush clumps with visible elephant impacts.
	TEP OW C	-26.93544 S, 32.45007 E	Plain with high level of <i>Terminalia sericea</i> encroachment.
	TEP OW D	-27.04497 S, 32.38790 E	Partially under a large <i>Terminalia sericea</i> tree in between bush clumps.
	TEP SW A	-26.90286 S, 32.47031 E	Mixed short and tall grasses with <i>Terminalia sericea</i> encroachment along a plain.
	TEP SW B	-26.95990 S, 32.48706 E	Plain with heavy woody encroachment, burnt 2019.
	TEP SW C	-27.02133 S, 32.44905 E	Plain with short grass layer and woody encroachment, burnt 2019.
	TEP SW D	-26.97357 S, 32.39400 E	Top of small dune along western fence line, short grassland between bushes, burnt during late 2018.
CLOSED WOODLAND	TEP CW A	-26.88317 S, 32.58279 E	Close to Muzi swamp, on hard soil, little grass cover, dense canopy cover.
	TEP CW B	-26.86576 S, 32.58682 E	Under continuous canopy with little grass cover, elephant damage evident, close to the Muzi border post.
	TEP CW C	-26.86586 S, 32.46568 E	Partially under <i>Azelia quadzensis</i> canopy, little grass cover, surrounded by bushes and vines.
	TEP CW D	-26.95895 S, 32.51657 E	Under low continuous canopy with a continuous low grass layer.

	TEP CW E	-26.98828 S, 32.49839 E	High partial canopy with scattered low growing grass layer, evidence of elephant impact.
FOREST	TEP SF A	-26.86471 S, 32.51647 E	Near to complete canopy cover with no grass layer, moderate layer of detrital cover, in Selani forest.
	TEP SF B	-26.88253 S, 32.49255 E	Small clump of degraded sand forest (Figure 6 B) with no understory and near complete canopy cover.
	TEP SF C	-27.00622 S, 32.47880 E	Near complete canopy cover with moderate understory, little detrital cover in Masiswana forest.
	TEP SF D	-26.95438 S, 32.40554 E	Small clump of dense sand forest with complete canopy cover, dense understory, and thick detrital cover.
	TEP SF E	-27.03040 S, 32.41718 E	Short sand forest with near complete canopy closure and a dense understory, moderate detrital cover, in previous elephant exclusion zone.

TABLE S2. The amphibian captures (and catch per unit effort) of the closed woodland and sand forest arrays during the pitfall and funnel trap survey conducted over December 2019 on Tembe Elephant Park, KwaZulu-Natal province, South Africa.

AMPHIBIAN SPECIES	CLOSED WOODLAND					SAND FOREST				
	A	B	C	D	E	A	B	C	D	E
Arthroleptidae										
<i>Arthroleptis stenodactylus</i> Pfeffer 1893, Shovel-footed Squeaker	7 (0.026)	5 (0.018)	10 (0.037)	6 (0.022)	7 (0.026)	6 (0.022)	3 (0.011)	1 (0.004)	3 (0.011)	2 (0.007)
<i>Leptopelis mossambicus</i> Poynton 1985, Brown-backed Tree Frog	1 (0.004)	0	0	0	0	0	0	0	0	0
Brevicipitidae										
<i>Breviceps mossambicus</i> Peters 1854, Mozambican Rain Frog	0	0	8 (0.029)	1 (0.004)	4 (0.015)	0	4 (0.015)	2 (0.007)	3 (0.011)	1 (0.004)
Bufonidae										
<i>Sclerophrys garmani</i> (Meek 1897), Eastern Olive Toad	1 (0.004)	0	0	0	0	0	0	0	0	0
Hemisotidae										
<i>Hemisis marmoratus</i> (Peters 1854), Mottled Shovel-nosed Frog	0	0	0	1 (0.004)	1 (0.004)	0	0	1 (0.004)	0	0
Hyperoliidae										

<i>Hylambates maculatus</i> (Dumeril 1854), Red-legged Kassina	2	1	0	0	0	0	0	0	0	0
	(0.007)	(0.004)								
<i>Hyperulius marmoratus taeniatus</i> Peters 1854, Painted Reed Frog	2	0	0	0	0	0	0	0	0	0
	(0.007)									
<i>Kassina senegalensis</i> (Dumeril & Bibron 1841), Bubbling Kassina	1	0	0	1	4	0	1	0	2	0
	(0.004)			(0.004)	(0.015)		(0.004)		(0.007)	
Microhylidae										
<i>Phrynomantis bifasciatus</i> (Smith 1847), Banded Rubber Frog	8	4	0	0	8	0	1	0	1	0
	(0.029)	(0.015)			(0.029)		(0.004)		(0.004)	
Pyxicephalidae										
<i>Tomopterna adiastrata</i> Channing & du Preez 2020, Knocking Sand Frog	0	0	0	0	2	0	0	2	0	0
					(0.007)			(0.007)		
TOTAL AMPHIBIANS	22	10	18	9	26	6	9	6	9	3
	(0.081)	(0.037)	(0.066)	(0.033)	(0.095)	(0.022)	(0.033)	(0.022)	(0.033)	(0.011)
SPECIES RICHNESS	7	3	2	4	6	1	4	4	4	2

TABLE S3. The amphibian captures (and catch per unit effort) of the closed woodland and sand forest arrays during the pitfall and funnel trap survey conducted over December 2019 on Tembe Elephant Park, KwaZulu-Natal province, South Africa.

AMPHIBIAN SPECIES	OPEN WOODLAND				SPARSE WOODLAND			
	A	B	C	D	A	B	C	D
Brevicipitidae								
<i>Breviceps mossambicus</i> Peters 1854, Mozambican Rain Frog	9 (0.033)	8 (0.029)	10 (0.037)	21 (0.077)	15 (0.055)	16 (0.059)	15 (0.055)	5 (0.018)
Hyperoliidae								
<i>Kassina senegalensis</i> (Dumeril & Bibron 1841), Bubbling Kassina	0	0	0	0	0	0	1 (0.004)	0
Microhylidae								
<i>Phrynomantis bifasciatus</i> (Smith 1847), Banded Rubber Frog	1 (0.004)	0	0	2 (0.007)	0	4 (0.015)	0	1 (0.004)
Pyxicephalidae								
<i>Tomopterna adiaastola</i> Channing & du Preez 2020, Knocking Sand Frog	0	1 (0.004)	0	1 (0.004)	0	2 (0.007)	1 (0.004)	0
TOTAL AMPHIBIANS	10 (0.037)	9 (0.033)	10 (0.037)	24 (0.088)	15 (0.055)	22 (0.081)	17 (0.062)	6 (0.022)

SPECIES RICHNESS

2

2

1

3

1

3

3

2

	(0.005)									
<i>Hyperulius marmoratus taeniatus</i> Peters 1854, Painted Reed Frog	0	0	0	0	1	0	0	0	0	0
					(0.005)					
<i>Kassina senegalensis</i> (Dumeril & Bibron 1841), Bubbling Kassina	0	2	0	0	1	1	0	0	0	0
		(0.009)			(0.005)	(0.005)				
Phrynobatrachidae										
<i>Phrynobatrachus mababiensis</i> FitzSimons 1932, Dwarf Puddle Frog	3	0	1	0	3	0	0	0	0	0
	(0.014)		(0.005)		(0.014)					
Microhylidae										
<i>Phrynomantis bifasciatus</i> (Smith 1847), Banded Rubber Frog	3	0	0	0	0	0	0	0	0	0
	(0.014)									
Pyxicephalidae										
<i>Pyxicephalus edulis</i> Peters 1854, African Bullfrog	1	0	0	0	0	0	0	0	0	0
	(0.005)									
<i>Tomopterna adiastrata</i> Channing & du Preez 2020, Tremelo Sand Frog	2	1	0	0	0	0	0	0	0	0
	(0.009)	(0.005)								
<i>Tomopterna krugerensis</i> Passmore & Carruthers 1975, Knocking Sand Frog	0	2	0	0	1	0	1	0	0	0
		(0.009)			(0.005)		(0.005)			
TOTAL AMPHIBIANS	19	9	18	1	14	2	8	13	5	4

	(0.086)	(0.041)	(0.081)	(0.005)	(0.063)	(0.009)	(0.036)	(0.059)	(0.023)	(0.018)
SPECIES RICHNESS	9	5	3	1	8	2	4	3	2	2

TABLE S5. The amphibian captures of the Coastal Grassland, Woody Grassland, Sand Thicket, and dilapidated Eucalyptus plantation block arrays during the pitfall and funnel trap survey conducted over January and March 2020 on Maputo National Park, Maputo Province, Mozambique.

AMPHIBIAN SPECIES	COASTAL GRASSLAND				WOODY GRASSLAND				SAND THICKET				EUCALYPTUS PLANTATION			
	A	B	C	D	A	B	C	D	A	B	C	D	A	B	C	D
Brevicipitidae																
<i>Breviceps mossambicus</i> Peters 1854, Mozambican Rain Frog	0	2	4	12	7	23	17	11	5	3	4	3	2	2	7	3
		(0.009)	(0.018)	(0.054)	(0.032)	(0.104)	(0.077)	(0.05)	(0.023)	(0.014)	(0.018)	(0.014)	(0.009)	(0.009)	(0.032)	(0.014)
Bufonidae																
<i>Sclerophrys gutturalis</i> (Power 1927), Guttural Toad	0	0	0	0	0	0	0	0	1	0	0	0	0	0	0	0
									(0.005)							
Hyperoliidae																
<i>Hyperulius marmoratus</i> <i>taeniatus</i> Peters 1854, Painted Reed Frog	0	0	0	0	0	0	1	0	1	0	0	0	0	0	0	0
							(0.005)		(0.005)							
<i>Kassina senegalensis</i> (Dumeril & Bibron 1841), Bubbling Kassina	0	0	0	0	0	0	0	1	1	0	0	1	0	0	0	0
								(0.005)	(0.005)			(0.005)				
Phrynobatrachidae																
<i>Phrynobatrachus</i> <i>mababiensis</i> FitzSimons 1932, Dwarf Puddle Frog	0	0	0	0	0	1	0	0	0	1	0	0	0	0	0	0
						(0.005)				(0.005)						
Pyxicephalidae																

<i>Tomopterna adiastrata</i> Channing & du Preez, Tremelo Sand Frog	0	0	0	0	0	0	1	2	0	1	0	0	0	0	0	0
							(0.005)	(0.009)		(0.005)						
<i>Tomopterna krugerensis</i> Passmore & Carruthers 1975, Knocking Sand Frog	0	0	0	0	0	0	2	9	1	1	0	0	0	0	0	0
							(0.009)	(0.041)	(0.005)	(0.005)						
TOTAL AMPHIBIANS	0	2	4	12	7	24	21	23	9	6	4	4	2	2	7	3
		(0.009)	(0.018)	(0.054)	(0.032)	(0.109)	(0.095)	(0.104)	(0.041)	(0.027)	(0.018)	(0.018)	(0.009)	(0.009)	(0.032)	(0.014)
SPECIES RICHNESS	0	1	1	1	1	2	4	4	4	4	1	2	1	1	1	1

TABLE S6. A summary of the total amphibian captures for each habitat category during the Tembe Elephant Park survey (CPUE). Vouchers: PEM A = Port Elisabeth Museum Amphibian specimen number; BDI FM = Biodiversity Development Institute Frog Map record number.

	Savanna		Closed	Sand Forest	Vouchers
	Open Woodland	Sparse Woodland	Woodland		
Number of PFT arrays	4	4	5	5	
Arthroleptidae					
<i>Arthroleptis stenodactylus</i> Pfeffer 1893	0	0	35 (0.026)	15 (0.011)	PEM A15342
Shovel-footed Squeaker					
<i>Leptopelis mossambicus</i> Poynton 1985	0	0	1 (0.001)	0	BDI FM 13832
Brown-backed Tree Frog					
Brevicipitidae					
<i>Breviceps mossambicus</i> Peters 1854	48 (0.044)	51 (0.047)	13 (0.01)	10 (0.007)	PEM A15346
Mozambican Rain Frog					
Bufonidae					
<i>Sclerophrys garmani</i> (Meek 1897)	0	0	1 (0.001)	0	BDI FM 13922
Eastern Olive Toad					
Hemisotidae					
<i>Hemisis marmoratus</i> (Peters 1854)	0	0	2 (0.002)	1 (0.001)	BDI FM 13834
Mottled Shovel-nosed Frog					
Hyperoliidae					
<i>Hylambates maculatus</i> (Dumeril 1854)	0	0	3 (0.002)	0	BDI FM 13833
Red-legged Kassina					
<i>Hyperulius marmoratus taeniatus</i> Peters 1854	0	0	2 (0.002)	0	PEM A15345
Painted Reed Frog					
<i>Kassina senegalensis</i> (Dumeril & Bibron 1841)	0	1 (0.001)	6 (0.004)	3 (0.002)	PEM A15341
Bubbling Kassina					
Microhylidae					
<i>Phrynomantis bifasciatus</i> (Smith 1847)	3 (0.003)	5 (0.005)	20 (0.015)	2 (0.002)	PEM A15344
Banded Rubber Frog					
Pyxicephalidae					
<i>Tomopterna adiantola</i> Channing & du Preez	2 (0.002)	3 (0.003)	2 (0.002)	2 (0.002)	BDI FM 13830
Knocking Sand Frog					
TOTAL AMPHIBIANS	53 (0.049)	60 (0.055)	85 (0.062)	33 (0.024)	231 (0.047)
SPECIES RICHNESS	3	4	10	6	10

TABLE S7. A summary of the total amphibian captures for each habitat category during the Maputo National Park survey (CPUE). Vouchers: PRJ = MNP collection number; BDI FM = Biodiversity Development Institute Frog Map record number.

	Grassland		Savanna	Forest		Vouchers	
	<i>Eucalyptus</i> Plantation	Coastal grassland	Woody grassland	Sand Thicket	Coastal Dune Forest		Sand Forest
Number of PFT arrays per habitat	4	4	4	4	4	6	
Arthroleptidae							
<i>Arthroleptis stenodactylus</i> Pfeffer 1893	0	0	0	0	14	22	BDI FM14640
Shovel-footed Squeaker					(0.016)	(0.017)	
<i>Leptopelis mossambicus</i> Poynton 1985	0	0	0	0	3	4	BDI FM14641
Brown-backed Tree Frog					(0.003)	(0.003)	
Brevicipitidae							
<i>Breviceps mossambicus</i> Peters 1854	14	18	58	15	12	6	PRJ 264
Mozambican Rain Frog	(0.016)	(0.02)	(0.066)	(0.017)	(0.014)	(0.005)	
Bufo							
<i>Sclerophrys garmani</i> (Meek 1897)	0	0	0	0	0	1	PRJ 277
Eastern Olive Toad						(0.001)	
<i>Sclerophrys gutturalis</i> (Power 1927)	0	0	0	1	0	7	PRJ 262
Guttural Toad				(0.001)		(0.005)	
Hyperoliidae							
<i>Hylambates maculatus</i> (Dumeril 1854)	0	0	0	0	0	1	PRJ 266
Red-legged Kassina						(0.001)	
<i>Hyperolius marmoratus taeniatus</i> Peters 1854	0	0	1	1	0	1	BDI FM14639
Painted Reed Frog			(0.001)	(0.001)		(0.001)	
<i>Kassina senegalensis</i> (Dumeril & Bibron 1841)	0	0	1	2	0	4	PRJ 266
Bubbling Kassina			(0.001)	(0.002)		(0.003)	

Phrynobatrachidae							
<i>Phrynobatrachus mababiensis</i> FitzSimons 1932	0	0	1	1	0	7	PRJ 267
Dwarf Puddle Frog			(0.001)	(0.001)		(0.005)	
Microhylidae							
<i>Phrynomantis bifasciatus</i> (Smith 1847)	0	0	0	0	0	3	PRJ 260
Banded Rubber Frog						(0.002)	
Pyxicephalidae							
<i>Phyixcephalus edulis</i> Peters 1854	0	0	0	0	0	1	BDI FM14638
African Bullfrog						(0.001)	
<i>Tomopterna adiastrata</i> Channing & du Preez	0	0	3	1	0	3	PRJ 259
Tremelo Sand Frog			(0.003)	(0.001)		(0.002)	
<i>Tomopterna krugerensis</i> Passmore & Carruthers 1975	0	0	11	2	1	3	PRJ 281
Knocking Sand Frog			(0.012)	(0.002)	(0.001)	(0.002)	
TOTAL AMPHIBIANS	14	18	75	23	30	63	223
	(0.016)	(0.02)	(0.085)	(0.026)	(0.034)	(0.048)	(0.039)
SPECIES RICHNESS	1	1	6	7	4	13	13

Table S8. The reptile captures (and catch per unit effort) of the closed woodland and sand forest arrays during the pitfall and funnel trap survey conducted over December 2019 on Tembe Elephant Park, KwaZulu-Natal province, South Africa.

REPTILE SPECIES	CLOSED WOODLAND					SAND FOREST				
	A	B	C	D	E	A	B	C	D	E
SAURIA										
Gekkonidae										
<i>Hemidactylus mabouia</i> (Mareau de Jonnes 1818), Common Tropical House Gecko	0	0	1 (0.004)	0	0	0	0	0	0	0
<i>Lygodactylus capensis capensis</i> (Smith 1849), Common Dwarf Gecko	0	2 (0.007)	0	0	0	2 (0.007)	0	0	2 (0.007)	0
Licertidae										
<i>Ichnotropis capensis</i> (Smit 1838), Ornate Rough-scaled Lizard	1 (0.004)	0	0	0	0	0	0	0	0	0
Scincidae										
<i>Acontias plumbeus</i> Bianconi 1849, Giant Legless Skink	0	0	0	0	0	0	0	0	1 (0.004)	0
<i>Scelotes arenicolus</i> (Peters 1854), Zululand Dwarf Burrowing Skink	0	0	0	0	1 (0.004)	0	0	0	0	0
<i>Trachylepis depressa</i> (Peters 1854), Eastern Sand Skink	0	1 (0.004)	1 (0.004)	5 (0.018)	2 (0.007)	3 (0.011)	0	2 (0.007)	2 (0.007)	3 (0.011)
<i>Trachylepis striata</i> (Peters 1844), Striped Skink	1 (0.004)	0	0	0	3 (0.011)	0	0	0	0	0
SERPENTES										
Colubridae										
<i>Crotaphopeltis hatamboeia</i> (Laurenti 1768), Red-lipped Snake	0	0	0	1 (0.004)	1 (0.004)	0	0	0	0	0
<i>Philothamnus natalensis</i> (Smith 1848),	0	0	1	0	1	1	3	1	0	0

Eastern Natal Green Snake			(0.004)		(0.004)	(0.004)	(0.011)	(0.004)		
<i>Philothamnus semivariegatus</i> (Smith 1847),	0	0	0	0	0	0	1	0	0	0
Spotted Bush Snake							(0.004)			
Elapidae										
<i>Naja subfulva</i> (Laurent 1955),	0	0	0	0	0	0	0	1	0	0
Brown Forest Cobra								(0.004)		
Lamprophiidae										
<i>Aparallactus capensis</i> (Smith 1849),	0	0	1	0	0	0	2	0	0	0
Black-headed Centipede-eater			(0.004)				(0.007)			
<i>Amblyodipsas microphthalma microphthalma</i> (Bianconi 1850),	0	0	0	1	1	0	0	1	1	1
Eastern Purple-glossed Snake				(0.004)	(0.004)			(0.004)	(0.004)	(0.004)
<i>Boaedon capensis</i> (Dumeril, Bibron, &Dumeril 1854),	0	1	0	0	0	0	0	0	0	0
Common House Snake		(0.004)								
<i>Gracilililima nyassae</i> (Gunter 1888),	1	0	0	3	0	0	0	2	0	0
Black File Snake	(0.004)			(0.011)				(0.007)		
<i>Lycophidion capense</i> (Smith 1831),	0	0	0	2	1	0	0	0	0	0
Cape Wolf Snake				(0.007)	(0.004)					
<i>Prosymna lineata</i> (Peters 1871),	0	0	0	0	0	0	0	0	0	1
Lined Shavel-snout										(0.004)
<i>Prosymna stuhlmanni</i> (Pfeffer 1893),	0	0	1	0	0	0	0	0	0	0
East African Shavel-snout			(0.004)							
<i>Psammophis brevirostris</i> Peters 1881,	0	0	3	0	1	0	1	0	0	0
Short-snouted Grass Snake					(0.004)		(0.004)			
<i>Psammophis mossambicus</i> Peters 1882,	0	0	0	0	1	0	0	0	0	0
Olive Grass Snake					(0.004)					
Typhlopidae										
<i>Afrotyphlops fornasinii</i> (Bianconi 1849),	0	0	8	2	0	3	0	2	2	4
Fornasini's Blind Snake			(0.029)	(0.007)		(0.011)		(0.007)	(0.007)	(0.015)
TOTAL REPTILES	3	4	16	14	12	9	7	9	8	9

	(0.011)	(0.015)	(0.059)	(0.051)	(0.044)	(0.033)	(0.026)	(0.033)	(0.029)	(0.033)
REPTILE RICHNESS	3	3	7	6	9	4	4	6	5	4

Table S9. The reptile captures (and catch per unit effort) of the Open Woodland and Sparse Woodland arrays during the pitfall and funnel trap survey conducted over December 2019 on Tembe Elephant Park, KwaZulu-Natal province, South Africa.

REPTILE SPECIES	OPEN WOODLAND				SPARSE WOODLAND			
	A	B	C	D	A	B	C	D
SAURIA								
Gekkonidae								
<i>Lygodactylus capensis capensis</i> (Smith 1849), Common Dwarf Gecko	0	1 (0.004)	2 (0.007)	0	0	2 (0.007)	0	1 (0.004)
Gerrhosauridae								
<i>Gerrhosaurus flavigularis</i> Wiegmann 1828, Yellow-throated Plated Lizard	3 (0.011)	6 (0.022)	3 (0.011)	0	4 (0.015)	1 (0.004)	8 (0.029)	8 (0.029)
Licertidae								
<i>Ichnotropis capensis</i> (Smit 1838), Ornate Rough-scaled Lizard	2 (0.007)	0	2 (0.007)	3 (0.011)	0	1 (0.004)	2 (0.007)	6 (0.022)
<i>Meroles squamulosus</i> (Peters 1854), Savanna Lizard	0	0	0	3 (0.011)	0	0	0	0
<i>Nucras intertexta</i> (Smith 1838), Spotted Sandveld Lizard	0	0	0	1 (0.004)	0	0	0	1 (0.004)
Scincidae								
<i>Panaspis wahlbergi</i> (Smith 1849), Wahlberg's Snake-eyed Skink	0	0	3 (0.011)	0	5 (0.018)	3 (0.011)	3 (0.011)	0
<i>Scelotes arenicolus</i> (Peters 1854), Zululand Dwarf Burrowing Skink	1 (0.004)	0	0	0	0	0	0	0
<i>Trachylepis depressa</i> (Peters 1854), Eastern Sand Skink	0	0	0	1 (0.004)	0	2 (0.007)	1 (0.004)	1 (0.004)
<i>Trachylepis striata</i> (Peters 1844), Striped Skink	0	0	0	1 (0.004)	0	0	0	0

SERPENTES**Colubridae**

<i>Crotaphopeltis hatamboeia</i> (Laurenti 1768), Red-lipped Snake	2 (0.007)	1 (0.004)	1 (0.004)	1 (0.004)	0	1 (0.004)	0	0
<i>Dasypeltis scabra</i> (Linnaeus 1758), Rhombic Egg-eater	1 (0.004)	1 (0.004)	0	0	0	0	0	0
<i>Philothamnus semivariegatus</i> (Smith 1847), Spotted Bush Snake	0	0	0	0	0	1 (0.004)	0	0

Elapidae

<i>Elapsoidea sundevallii decosteri</i> Boulenger 1888, De Coster's Garter Snake	0	0	1 (0.004)	1 (0.004)	0	2 (0.007)	3 (0.011)	0
<i>Naja annulifera</i> Peters 1854, Snouted Cobra	0	0	0	0	0	1 (0.004)	0	0

Lamprophiidae

<i>Amblyodipsas microphthalma microphthalma</i> (Bianconi 1850), Eastern Purple-glossed Snake	0	0	1 (0.004)	0	0	0	0	0
<i>Aparallactus capensis</i> (Smith 1849), Black-headed Centipede-eater	0	3 (0.011)	0	0	2 (0.007)	1 (0.004)	0	1 (0.004)
<i>Boaedon capensis</i> (Dumeril, Bibron, &Dumeril 1854), Common House Snake	0	1 (0.004)	0	0	0	0	0	0
<i>Prosymna janii</i> Bianconi 1862, Mozambique Shovel-snout	0	0	0	0	0	1 (0.004)	0	0
<i>Psammophis brevirostris</i> Peters 1881, Short-snouted Grass Snake	1 (0.004)	1 (0.004)	4 (0.015)	2 (0.007)	5 (0.018)	0	2 (0.007)	5 (0.018)
<i>Pseudaspis cana</i> (Linnaeus 1758), Mole Snake	0	0	0	0	0	1 (0.004)	0	0

Typhlopidae

<i>Afrotrophlops fornasinii</i> (Bianconi 1849), Fornasini's Blind Snake	0	0	1 (0.004)	4 (0.015)	0	1 (0.004)	0	0
---	---	---	--------------	--------------	---	--------------	---	---

TOTAL REPTILES	10	14	18	17	16	18	19	23
	(0.037)	(0.051)	(0.066)	(0.062)	(0.059)	(0.066)	(0.07)	(0.084)
REPTILE RICHNESS	6	7	9	9	4	13	6	7

Table S10. The reptile captures (and catch per unit effort) of the Coastal Dune Forest and Sand Forest arrays during the pitfall and funnel trap survey conducted over January and March 2020 on Maputo National Park, Maputo Province, Mozambique.

REPTILE SPECIES	SAND FOREST						COASTAL DUNE FOREST			
	A	B	C	D	E	F	A	B	C	D
CHELONIA										
Testudinidae										
<i>Kinixys zombensis</i> Hewitt 1931, Eastern Hinged-back Tortoise	0	0	0	0	0	0	0	1 (0.005)	0	0
SAURIA										
Gekkonidae										
<i>Hemidactylus mabouia</i> (Mareau de Jonnes 1818), Common Tropical House Gecko	0	1 (0.005)	0	0	0	0	0	0	0	0
<i>Lygodactylus capensis capensis</i> (Smith 1849), Common Dwarf Gecko	0	0	0	0	0	0	1 (0.005)	0	0	0
Scincidae										
<i>Acontias plumbeus</i> Bianconi 1849, Giant Legless Skink	0	0	0	0	2 (0.009)	0	0	0	0	0
<i>Scelotes arenicolus</i> (Peters 1854), Zululand Dwarf Burrowing Skink	0	0	0	0	1 (0.005)	0	0	0	0	0
<i>Scelotes fitsimensi</i> Broadley 1994, FitzSimons' Dwarf Burrowing Skink	0	0	0	0	1 (0.005)	1 (0.005)	0	0	6 (0.027)	0
<i>Scelotes vestigifer</i> Broadley 1994, Coastal Dwarf Burrowing Skink	1 (0.005)	0	0	0	0	0	3 (0.014)	0	5 (0.023)	2 (0.009)
<i>Trachylepis depressa</i> (Peters 1854), Eastern Sand Skink	4 (0.018)	6 (0.027)	6 (0.027)	5 (0.023)	2 (0.009)	0	1 (0.005)	6 (0.027)	18 (0.081)	1 (0.005)
SERPENTES										

Speckled Quill-snouted Snake									(0.005)	
Leptotyphlopidae										
<i>Leptotyphlops cf. scutifrons</i> (Peters 1854), Peter's Thread Snake	0	0	2	0	0	0	0	0	0	0
			(0.009)							
Natricidae										
<i>Natriciteres sylvatica</i> Broadley 1966, Forest Marsh Snake	1	0	0	0	0	0	0	0	0	0
	(0.005)									
Typhlopidae										
<i>Afrotrophlops fornasinii</i> (Bianconi 1849), Fornasini's Blind Snake	9	2	3	4	1	0	2	5	2	0
	(0.041)	(0.009)	(0.014)	(0.018)	(0.005)		(0.009)	(0.023)	(0.009)	
TOTAL REPTILES	18	12	12	10	8	3	16	14	34	8
	(0.081)	(0.054)	(0.054)	(0.045)	(0.036)	(0.014)	(0.072)	(0.063)	(0.154)	(0.036)
SPECIES RICHNESS	7	5	4	3	6	3	8	6	7	5

Table S11. The reptile captures of the Coastal Grassland, Woody Grassland, Sand Thicket, and dilapidated Eucalyptus plantation block arrays during the pitfall and funnel trap survey conducted over January and March 2020 on Maputo National Park, Maputo Province, Mozambique.

REPTILE SPECIES	COASTAL GRASSLAND				WOODY GRASSLAND				SAND THICKET				EUCALYPTUS PLANTATION			
	A	B	C	D	A	B	C	D	A	B	C	D	A	B	C	D
SAURIA																
Agamidae																
<i>Acanthocercus a. atricollis</i> (Smith 1849), Southern Tree Agama	0	0	0	0	0	0	0	0	1 (0.005)	0	0	0	0	0	0	0
Gekkonidae																
<i>Lygodactylus capensis</i> (Smith 1849), Common Dwarf Gecko	1 (0.005)	0	0	1 (0.005)	0	0	0	0	0	4 (0.018)	0	0	1 (0.005)	1 (0.005)	1 (0.005)	0
Gerrhosauridae																
<i>Gerrhosaurus flavigularis</i> Wiegmann 1828, Yellow-throated Plated Lizard	4 (0.018)	2 (0.009)	4 (0.018)	6 (0.027)	9 (0.041)	8 (0.036)	11 (0.05)	9 (0.041)	2 (0.009)	3 (0.014)	0	1 (0.005)	0	0	3 (0.014)	0
Licertidae																
<i>Ichnotropis capensis</i> (Smit 1838), Ornate Rough-scaled Lizard	0	0	0	1 (0.005)	0	0	0	1 (0.005)	0	0	0	0	0	0	0	0
<i>Meroles squamulosus</i> (Peters 1854), Savanna Lizard	0	0	0	0	0	0	0	1 (0.005)	1 (0.005)	0	0	0	0	0	1 (0.005)	0
<i>Nucras intertexta</i> (Smith 1838), Spotted Sandveld Lizard	0	0	0	0	0	1 (0.005)	1 (0.005)	0	0	1 (0.005)	0	0	1 (0.005)	0	0	0
Scincidae																
<i>Acontias parietalis</i> (Broadley 1990), Maputaland Legless Skink	0	1 (0.005)	0	0	0	0	0	0	0	0	0	0	0	0	0	0
<i>Acontias plumbeus</i> Bianconi 1849, Giant Legless Skink	1 (0.005)	0	0	0	0	0	0	0	0	0	0	0	0	0	0	0
<i>Panaspis walbergi</i> (Smith 1849), Wahlberg's snake-eyed skink	1 (0.005)	1 (0.005)	3 (0.014)	2 (0.009)	2 (0.009)	1 (0.005)	0	2 (0.009)	4 (0.018)	5 (0.023)	6 (0.027)	1 (0.005)	2 (0.009)	2 (0.009)	6 (0.027)	2 (0.009)
<i>Scelotes arenicolus</i> (Peters 1854), Zululand Dwarf Burrowing Skink	0	0	0	0	0	0	0	1 (0.005)	0	0	0	0	0	0	1 (0.005)	0

<i>Scelotes mossambicus</i> (Peters 1882), Mozambique Dwarf Burrowing Skink	0	0	0	0	0	0	0	0	0	0	0	0	0	0	0	1 (0.005)
<i>Trachylepis depressa</i> (Peters 1854), Eastern Sand Skink	0	1 (0.005)	0	0	0	1 (0.005)	0	0	3 (0.014)	0	0	4 (0.018)	7 (0.032)	1 (0.005)	0	0
<i>Trachylepis striata</i> (Peters 1844), Striped Skink	0	0	0	0	0	0	0	0	0	0	0	0	0	0	0	1 (0.005)
Varanidae																
<i>Varanus albigularis</i> (Daudin 1802), Southern Rock Monitor	0	0	0	0	0	1 (0.005)	0	0	0	0	0	0	0	0	0	0

SERPENTES

Colubridae

<i>Crotaphopeltis hotamboeia</i> (Laurenti 1768), Red-lipped snake	0	0	1 (0.005)	0	1 (0.005)	4 (0.018)	0	0	0	0	0	0	0	0	0	0
<i>Dasypeltis scabra</i> (Linnaeus 1758), Rhombic egg-eater	0	0	0	0	1 (0.005)	0	0	0	0	0	0	0	0	0	0	0
<i>Philothamnus hoplogaster</i> (Günther 1863), Southeastern green snake	0	0	0	1 (0.005)	1 (0.005)	1 (0.005)	0	0	1 (0.005)	1 (0.005)	0	0	0	0	0	0
<i>Philothamnus semivariiegatus</i> (Smith 1847), Spotted bush snake	0	0	0	0	0	1 (0.005)	0	0	0	1 (0.005)	0	0	0	0	0	0

Elapidae

<i>Elapsoidea sundevallii decosteri</i> Boulenger 1888, De Coster's Garter Snake	0	0	0	0	2 (0.009)	0	2 (0.009)	2 (0.009)	0	1 (0.005)	0	0	1 (0.005)	1 (0.005)	0	0
<i>Naja annulifera</i> Peters 1854, Snouted Cobra	0	0	0	0	1 (0.005)	1 (0.005)	1 (0.005)	0	0	0	0	0	1 (0.005)	1 (0.005)	0	0

Lamprophiidae

<i>Amblyodipsas microphthalma</i> <i>microphthalma</i> (Bianconi 1850), Eastern Purple-glossed Snake	0	0	0	0	0	0	0	0	0	1	0	0	0	0	0	0
										(0.005)						
<i>Amblyodipsas polylepis polylepis</i> (Bocage 1873), Common Purple-glossed Snake	0	0	0	0	0	0	0	0	0	0	0	1	0	0	0	0
												(0.005)				
<i>Aparallactus capensis</i> Smith 1849, Black-headed Centipede eater	0	1	0	0	0	1	0	0	0	0	1	0	0	0	0	0
		(0.005)				(0.005)					(0.005)					
<i>Atractaspis bibronii</i> Smith 1849, Bibron's stiletto snake	0	0	1	1	0	0	0	0	0	0	0	0	0	0	0	0
			(0.005)	(0.005)												
<i>Duberia variegata</i> (Peters 1854), Variegated Slug-eater	0	0	0	1	0	0	0	0	0	0	0	0	0	0	0	1
				(0.005)												(0.005)
<i>Lycophidion capense capense</i> (Smith 1831), Cape Wolf Snake	1	0	0	1	0	0	0	0	0	1	0	0	0	0	0	0
	(0.005)			(0.005)						(0.005)						
<i>Lycophidion pygmaeum</i> Broadley 1996, Pygmy Wolf Snake	0	0	0	0	0	0	0	0	0	0	1	0	0	0	0	0
											(0.005)					
<i>Prosymna janii</i> Bianconi 1862, Mozambique Shovel-snout	0	0	0	0	0	0	0	0	1	0	0	0	4	0	0	0
									(0.005)				(0.018)			
<i>Prosymna stuhlmannii</i> (Pfeffer 1893), East African Sovel-snout	0	0	0	0	0	1	0	0	0	0	0	1	1	2	0	1
						(0.005)						(0.005)	(0.005)	(0.009)		(0.005)
<i>Psammodphis brevirostris</i> Peters 1881, Short-snouted Grass Snake	1	0	0	0	0	1	1	0	2	1	0	0	0	2	0	0
	(0.005)					(0.005)	(0.005)		(0.009)	(0.005)				(0.009)		
<i>Psammodphis mossambicus</i> Peters 1882, Olive Grass Snake	3	2	4	6	1	0	2	0	4	0	0	0	2	1	1	0
	(0.014)	(0.009)	(0.018)	(0.027)	(0.005)		(0.009)		(0.018)				(0.009)	(0.005)	(0.005)	
<i>Xenocalamus transvaalensis</i> Methuen 1919, Speckled quill-snouted snake	1	0	0	0	0	0	0	0	0	0	0	0	0	0	0	0
	(0.005)															
Leptotyphlopidae																
<i>Leptotyphlops cf. scutifrons</i> (Peters 1854) Peter's Threadsnake	0	0	1	0	0	0	1	0	0	0	1	0	0	0	0	1
			(0.005)				(0.005)				(0.005)					(0.005)

Typhlopidae

<i>Afrotyphlops fornasinii</i> (Bianconi 1849), Fornasini's Blind Snake	0	0	1 (0.005)	2 (0.009)	0	0	0	0	0	0	2 (0.009)	1 (0.005)	0	1 (0.005)	0	0
TOTAL REPTILES	13 (0.059)	8 (0.036)	15 (0.068)	22 (0.1)	18 (0.081)	22 (0.1)	19 (0.086)	16 (0.072)	20 (0.09)	18 (0.081)	11 (0.05)	9 (0.041)	20 (0.091)	12 (0.054)	13 (0.059)	7 (0.032)
SPECIES RICHNESS	8	6	7	10	8	12	7	6	10	9	5	6	9	9	6	6

TABLE S12. A summary of the total reptile captures for each habitat category during the Tembe Elephant Park survey (CPUE). Vouchers: PEM R = Port Elizabeth Museum Reptile specimen number; BDI RM = Biodiversity Development Institute Reptile Map record number.

	Savanna		Closed	Sand Forest	Vouchers
	Open Woodland	Sparse Woodland	Woodland		
SAURIA					
Gekkonidae					
<i>Hemidactylus mabouia</i> (Mareau de Jonnes 1818)	0	0	1	0	BDI RM205255
Common Tropical House Gecko			(0.001)		
<i>Lygodactylus c. capensis</i> (Smith 1849)	3	3	2	4	BDI RM205257
Common Dwarf Gecko	(0.003)	(0.003)	(0.001)	(0.003)	
Gerrhosauridae					
<i>Gerrhosaurus flavigularis</i> Wiegmann 1828	12	21	0	0	PEM R28155
Yellow-throated Plated Lizard	(0.011)	(0.019)			
Licertidae					
<i>Ichnotropis capensis</i> (Smit 1838)	7	9	1	0	PEM R28162
Ornate Rough-scaled Lizard	(0.006)	(0.008)	(0.001)		
<i>Meroles squamulosus</i> (Peters 1854)	3	0	0	0	BDI RM205258
Savanna Lizard	(0.003)				
<i>Nucras intertexta</i> (Smith 1838)	1	1	0	0	PEM R28157
Spotted Sandveld Lizard	(0.001)	(0.001)			
Scincidae					
<i>Acontias plumbeus</i> Bianconi 1849	0	0	0	1	BDI RM180879
Giant Legless Skink				(0.001)	
<i>Panaspis wahlbergi</i> (Smith 1849)	3	11	0	0	BDI RM199187
Wahlberg's Snake-eyed Skink	(0.003)	(0.01)			
<i>Scelotes arenicolus</i> (Peters 1854)	1	0	1	0	PEM R28165
Zululand Dwarf Burrowing Skink	(0.001)		(0.001)		

<i>Trachylepis depressa</i> (Peters 1854)	1	4	9	10	PEM R28181
Eastern Sand Skink	(0.001)	(0.004)	(0.007)	(0.007)	
<i>Trachylepis striata</i> (Peters 1844)	1	0	4	0	BDI RM205256
Striped Skink	(0.001)		(0.003)		

SERPENTES

Colubridae

<i>Crotaphopeltis hatamboeia</i> (Laurenti 1768)	5	1	2	0	BDI RM205253
Red-lipped Snake	(0.005)	(0.001)	(0.001)		
<i>Dasypeltis scabra</i> (Linnaeus 1758)	2	0	0	0	PEM R28170
Rhombic Egg-eater	(0.002)				
<i>Philothamnus natalensis</i> (Smith 1848)	0	0	2	4	BDI RM199188
Eastern Natal Green Snake			(0.001)	(0.003)	
<i>Philothamnus semivariegatus</i> (Smith 1847)	0	1	0	1	PEM R28179
Spotted Bush Snake		(0.001)		(0.001)	

Elapidae

<i>Elapsoidea sundevallii decosteri</i> Boulenger 1888	2	5	0	0	BDI RM180885
De Coster's Gather Snake	(0.002)	(0.005)			
<i>Naja annulifera</i> Peters 1854	0	1	0	0	PEM R28173
Snouted Cobra		(0.001)			
<i>Naja subfulva</i> (Laurent 1955)	0	0	0	1	PEM R28167
Brown Forest Cobra				(0.001)	

Lamprophiidae

<i>Amblyodipsas microphthalmalma microphthalmalma</i> (Bianconi 1850)	1	0	2	3	PEM R28161
Eastern Purple-glossed Snake	(0.001)		(0.001)	(0.002)	
<i>Aparallactus capensis</i> (Smith 1849)	3	4	1	2	BDI RM205254
Black-headed Centipede-eater	(0.003)	(0.004)	(0.001)	(0.001)	
<i>Boaedon capensis</i> (Dumeril, Bibron, &Dumeril 1854)	1	0	1	0	BDI RM 199180

Common House Snake	(0.001)		(0.001)		
<i>Gracilililima nyassae</i> (Gunter 1888)	0	0	4	2	BDI RM199189
Black File Snake			(0.003)	(0.001)	
<i>Lycophidion capense</i> (Smith 1831)	0	0	3	0	PEM R28195
Cape Wolf Snake			(0.002)		
<i>Prosymna janii</i> Bianconi 1862	0	1	0	0	BDI RM199184
Mozambique Shovel-snout		(0.001)			
<i>Prosymna lineata</i> (Peters 1871)	0	0	0	1	PEM R28166
Lined Shovel-snout				(0.001)	
<i>Prosymna stuhlmanni</i> (Pfeffer 1893)	0	0	1	0	BDI RM199183
East African Shovel-snout			(0.001)		
<i>Psammophis brevirostris</i> Peters 1881	8	12	4	1	PEM R28169
Short-snouted Grass Snake	(0.007)	(0.011)	(0.003)	(0.001)	
<i>Psammophis mossambicus</i> Peters 1882	0	0	1	0	BDI RM180887
Olive Grass Snake			(0.001)		
<i>Pseudaspis cana</i> (Linnaeus 1758)	0	1	0	0	PEM R28164
Mole Snake		(0.001)			
Typhlopidae					
<i>Afrotyphlops fornasinii</i> (Bianconi 1849)	5	1	10	11	PEM R28186
Fornasini's Blind Snake	(0.005)	(0.001)	(0.007)	(0.008)	
TOTAL REPTILES	57	79	49	41	226
	(0.052)	(0.072)	(0.036)	(0.03)	(0.046)
REPTILE RICHNESS	17	15	17	12	30

TABLE S13. A summary of the total reptile captures for each habitat category during the Maputo National Park survey (CPUE). Vouchers: PRJ = MNP collection number; BDI RM = Biodiversity Development Institute Reptile Map record number.

	<i>Eucalyptus</i> Plantation	Grassland		Savanna	Forest		Vouchers
		Coastal Grassland	Woody Grassland	Sand Thicket	Coastal Dune Forest	Sand Forest	
Number of PFT arrays per habitat	4	4	4	4	4	6	
CHELONIA							
Testudinidae							
<i>Kinixys zombensis</i> Hewitt 1931 Eastern Hinge-back Tortoise	0	0	0	0	1 (0.001)	0	BDI RM181938
SAURIA							
Agamidae							
<i>Acanthocercus atricollis atricollis</i> (Smith 1849) Southern Tree Agama	0	0	0	1 (0.001)	0	0	BDI RM205271
Gekkonidae							
<i>Hemidactylus mabouia</i> (Mareau de Jonnes 1818) Common Tropical House Gecko	0	0	0	0	0	1 (0.001)	
<i>Lygodactylus capensis capensis</i> (Smith 1849) Common Dwarf Gecko	3 (0.003)	2 (0.002)	0	4 (0.005)	1 (0.001)	0	BDI RM205272
Gerrhosauridae							
<i>Gerrhosaurus flavigularis</i> Wiegmann 1828 Yellow-throated Plated Lizard	3 (0.003)	16 (0.018)	37 (0.042)	6 (0.007)	0	0	PRJ 273
Licertidae							
<i>Ichnotropis capensis</i> (Smit 1838) Ornate Rough-scaled Lizard	0	1 (0.001)	1 (0.001)	0	0	0	BDI RM205273

<i>Meroles squamulosus</i> (Peters 1854) Savanna Lizard	1 (0.001)	0	1 (0.001)	1 (0.001)	0	0	PRJ 257
<i>Nucras intertexta</i> (Smith 1838) Spotted Sandveld Lizard	1 (0.001)	0	2 (0.002)	1 (0.001)	0	0	BDI RM205274
Scincidae							
<i>Acontias parietalis</i> (Broadley 1990) Maputaland Legless Skink	0	1 (0.001)	0	0	0	0	BDI RM181942
<i>Acontias plumbeus</i> Bianconi 1849 Giant Legless Skink	0	1 (0.001)	0	0	0	2 (0.002)	BDI RM181994
<i>Panaspis wahlbergi</i> (Smith 1849) Wahlberg's snake-eyed skink	12 (0.014)	7 (0.008)	5 (0.006)	16 (0.018)	0	0	PRJ 274
<i>Scelotes arenicolus</i> (Peters 1854) Zululand Dwarf Burrowing Skink	1 (0.001)	0	1 (0.001)	0	0	1 (0.001)	BDI RM205275
<i>Scelotes fitzsimonsi</i> Broadley 1994 FitzSimons' Dwarf Burrowing Skink	0	0	0	0	6 (0.007)	2 (0.002)	BDI RM179228
<i>Scelotes mossambicus</i> (Peters 1882) Mozambique Dwarf Burrowing Skink	1 (0.001)	0	0	0	0	0	BDI RM205276
<i>Scelotes vestigifer</i> Broadley 1994 Coastal Dwarf Burrowing Skink	0	0	0	0	10 (0.011)	1 (0.001)	BDIRM179230
<i>Trachylepis depressa</i> (Peters 1854) Eastern Sand Skink	8 (0.009)	1 (0.001)	1 (0.001)	7 (0.008)	26 (0.029)	23 (0.017)	PRJ 271
<i>Trachylepis striata</i> (Peters 1844) Striped Skink	1 (0.001)	0	0	0	0	0	BDI RM205280
Varanidae							
<i>Varanus albigularis</i> (Daudin 1802) Southern Rock Monitor	0	0	1 (0.001)	0	0	0	BDI RM205261

SERPENTES

Colubridae

<i>Crotaphopeltis hotamboeia</i> (Laurenti 1768)	0	1	5	0	0	0	BDI RM205268
Red-lipped Snake		(0.001)	(0.006)				
<i>Dasyplectis scabra</i> (Linnaeus 1758)	0	0	1	0	0	0	BDI RM205269
Rhombic Egg-eater			(0.001)				
<i>Philothamnus hoplogaster</i> (Günther 1863)	0	1	2	2	0	0	BDI RM181903
Southeastern Green Snake		(0.001)	(0.002)	(0.002)			
<i>Philothamnus natalensis</i> (Smith 1848)	0	0	0	0	6	3	BDI RM205260
Eastern Natal Green Snake					(0.007)	(0.002)	
<i>Philothamnus semivariegatus</i> (Smith 1847)	0	0	1	1	0	0	BDI RM181902
Spotted Bush Snake			(0.001)	(0.001)			

Elapidae

<i>Elapsoidea sundevallii decosteri</i> Boulenger 1888	2	0	6	1	0	1	PRJ 269
De Coster's Gather Snake	(0.002)		(0.007)	(0.001)		(0.001)	
<i>Naja annulifera</i> Peters 1854	2	0	3	0	0	0	BDI RM181915
Snouted Cobra	(0.002)		(0.003)				
<i>Naja subfulva</i> (Laurent 1955)	0	0	0	0	0	2	BDI RM181940
Brown Forest Cobra						(0.002)	

Lamprophiidae

<i>Amblyodipsas m. microphthalmalma</i> (Bianconi 1850)	0	0	0	1	6	0	PRJ 254
Eastern Purple-glossed Snake				(0.001)	(0.007)		
<i>Amblyodipsas polylepis polylepis</i> (Bocage 1873)	0	0	0	1	0	0	BDI RM181924
Common Purple-glossed Snake				(0.001)			
<i>Aparallactus capensis</i> Smith 1849	0	1	1	1	0	2	BDI RM181896
Black-headed Centipede Eater		(0.001)	(0.001)	(0.001)		(0.002)	
<i>Atractaspis bibronii</i> Smith 1849	0	2	0	0	0	0	BDI RM179399
Bibron's Stiletto Snake		(0.002)					
<i>Duberia variegata</i> (Peters 1854)	1	1	0	0	1	0	BDI RM181916
Variegated Slug-eater	(0.001)	(0.001)			(0.001)		

<i>Gracililima nyassae</i> (Gunter 1888) Black File Snake	0	0	0	0	0	1 (0.001)	BDI RM205277
<i>Lycophidion capense capense</i> (Smith 1831) Cape Wolf Snake	0	2 (0.002)	0	1 (0.001)	1 (0.001)	0	BDI RM205266
<i>Lycophidion pygmaeum</i> Broadley 1996 Pygmy Wolf Snake	0	0	0	1 (0.001)	1 (0.001)	0	PRJ 247
<i>Prosymna janii</i> Bianconi 1862 Mozambique Shovel-snout	4 (0.005)	0	0	1 (0.001)	3 (0.003)	0	BDI RM180868
<i>Prosymna stuhlmannii</i> (Pfeffer 1893) East African Sovel-snout	4 (0.005)	0	1 (0.001)	1 (0.001)	0	0	BDI RM181925
<i>Psammophis brevirostris</i> Peters 1881 Short-snouted Grass Snake	2 (0.002)	1 (0.001)	2 (0.002)	3 (0.003)	0	1 (0.001)	PRJ 265
<i>Psammophis mossambicus</i> Peters 1882 Olive Grass Snake	4 (0.005)	16 (0.018)	3 (0.003)	4 (0.005)	1 (0.001)	1 (0.001)	PRJ 248
<i>Xenocalamus transvaalensis</i> Methuen 1919 Speckled Quill-snouted Snake	0	1 (0.001)	0	0	1 (0.001)	0	BDI RM205278
Leptotyphlopidae							
<i>Lephtotyphlops cf. scutifrons</i> (Peters 1854) Peter's Thread Snake	1 (0.001)	1 (0.001)	1 (0.001)	1 (0.001)	0	2 (0.002)	BDI RM205279
Natricidae							
<i>Natriciteres sylvatica</i> Broadley 1966 Forest Marsh Snake	0	0	0	0	0	1 (0.001)	PRJ 252
Typhlopidae							
<i>Afrottyphlops fornasinii</i> (Bianconi 1849) Fornasini's Blind Snake	1 (0.001)	3 (0.003)	0	3 (0.003)	9 (0.01)	19 (0.014)	PRJ 258
TOTAL REPTILES	52 (0.059)	58 (0.066)	75 (0.085)	58 (0.066)	73 (0.083)	62 (0.047)	378 (0.066)
REPTILE RICHNESS	18	18	19	21	14	16	41

TABLE S14. Morphometric records of reptiles that exceeded the maximum size records in published references.

Species	Published maximum record	Reference	Maximum size record from the current study	Capture location
<i>Afrotrophops fornasinii</i> Fornasini's Blind Snake	Total length: 180 mm	Branch 1998	Total length: 195 mm Mass: 3.5 g	MNP EP B
<i>Amblyodipsas microphthalma microphthalma</i> Eastern Purple-glossed Snake	SVL: 320 mm	Branch 1998	SVL: 348 mm Total length: 376 mm Mass: 17.1 g	TEP CW D
<i>Elapsoidea sundevallii decosteri</i> De Coster's Gather Snake	Total length: 800 mm	Marais 2022	SVL: 754 mm Total length: 816 mm Mass: 189.5 g	TEP SW C

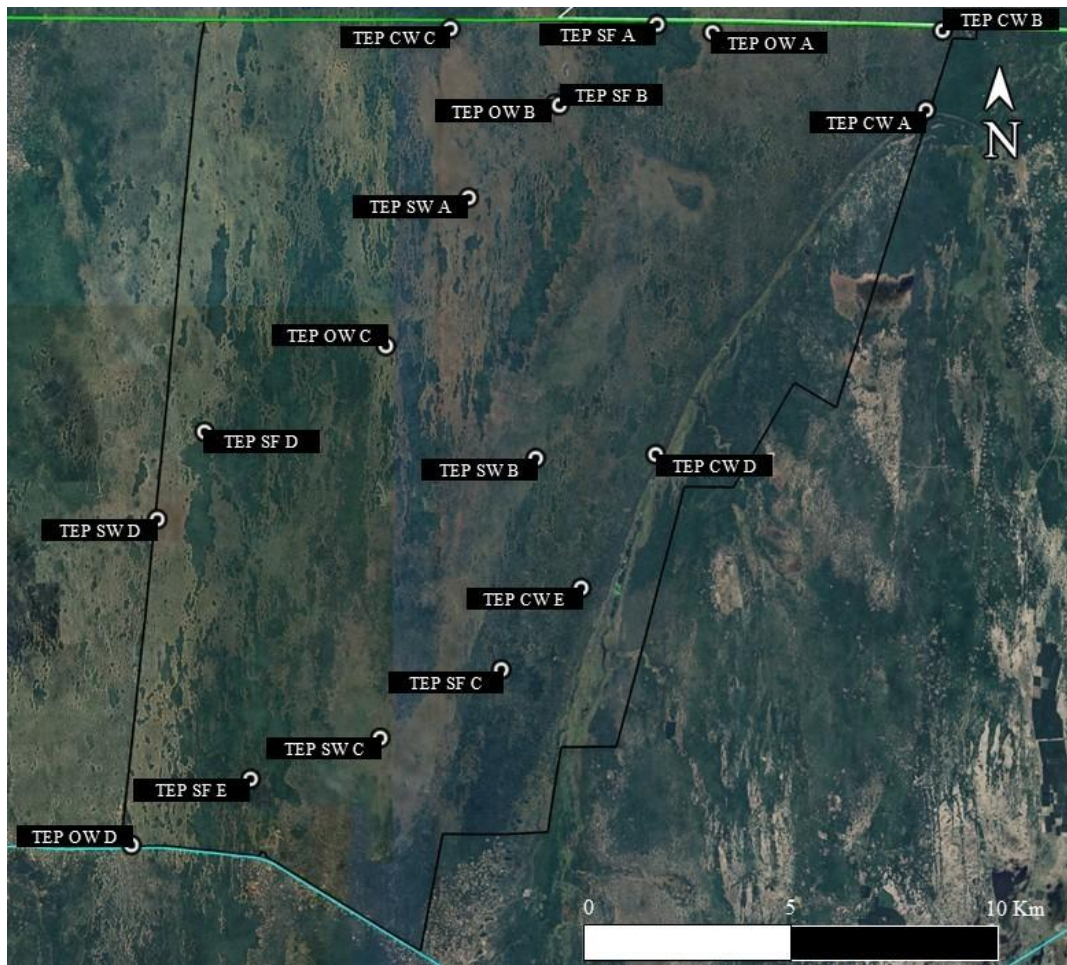


FIGURE S1. The extent of Tembe Elephant Park indicating the positions of the pitfall and funnel trap arrays during the December 2019 survey. CW= Closed Woodland; OW= Open Woodland; SF= Sand Forest; SW= Sparse Woodland.

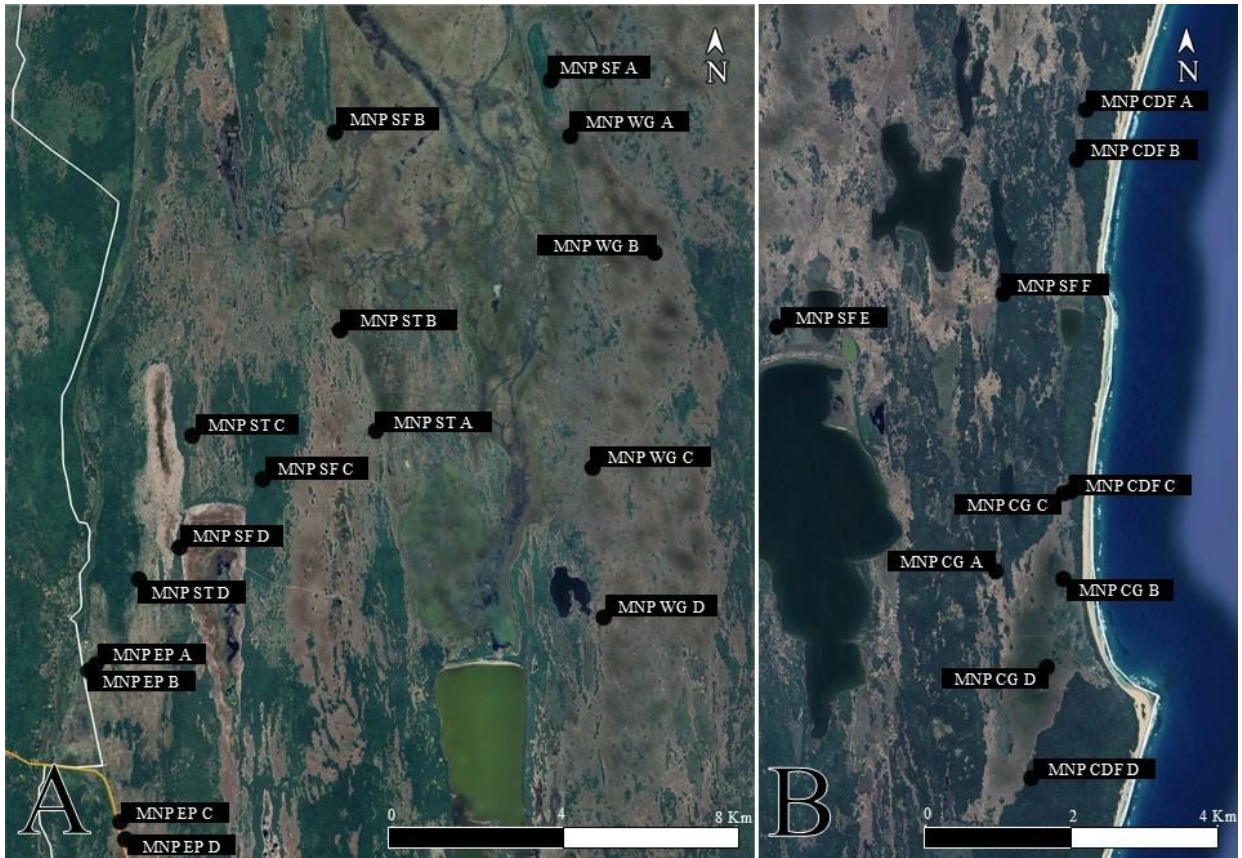


FIGURE S2. Pitfall and funnel trap array positions for the western and central survey (A) and the eastern survey (B) on Maputo National Park, 2020. CDF= Coastal Dune Forest; CG= Coastal Grassland; EP= *Eucalyptus* Plantations; SF= Sand Forest; ST= Sand Thicket; WG= Woody Grassland.

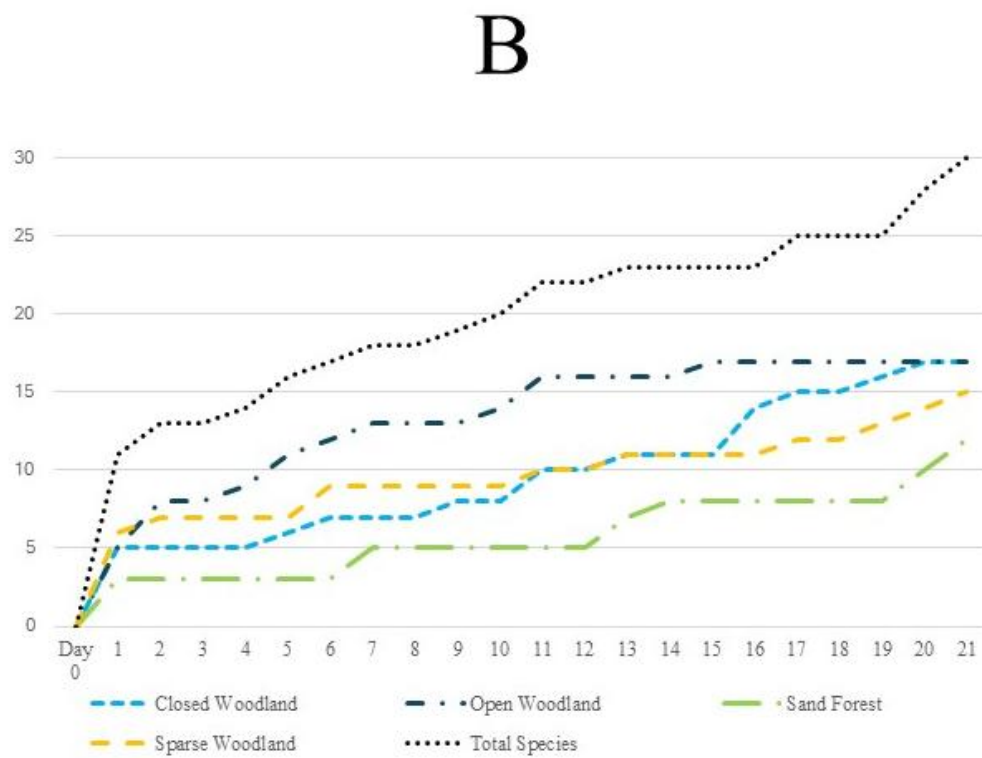
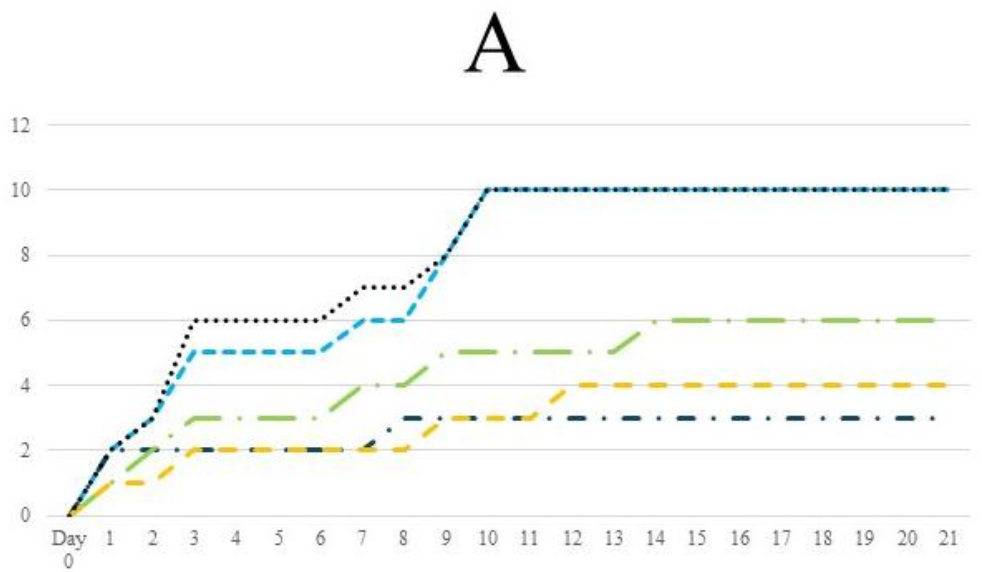


FIGURE S3. Species accumulation curves for amphibian (A) and reptile (B) species per active survey days for the Tembe Elephant Park survey.

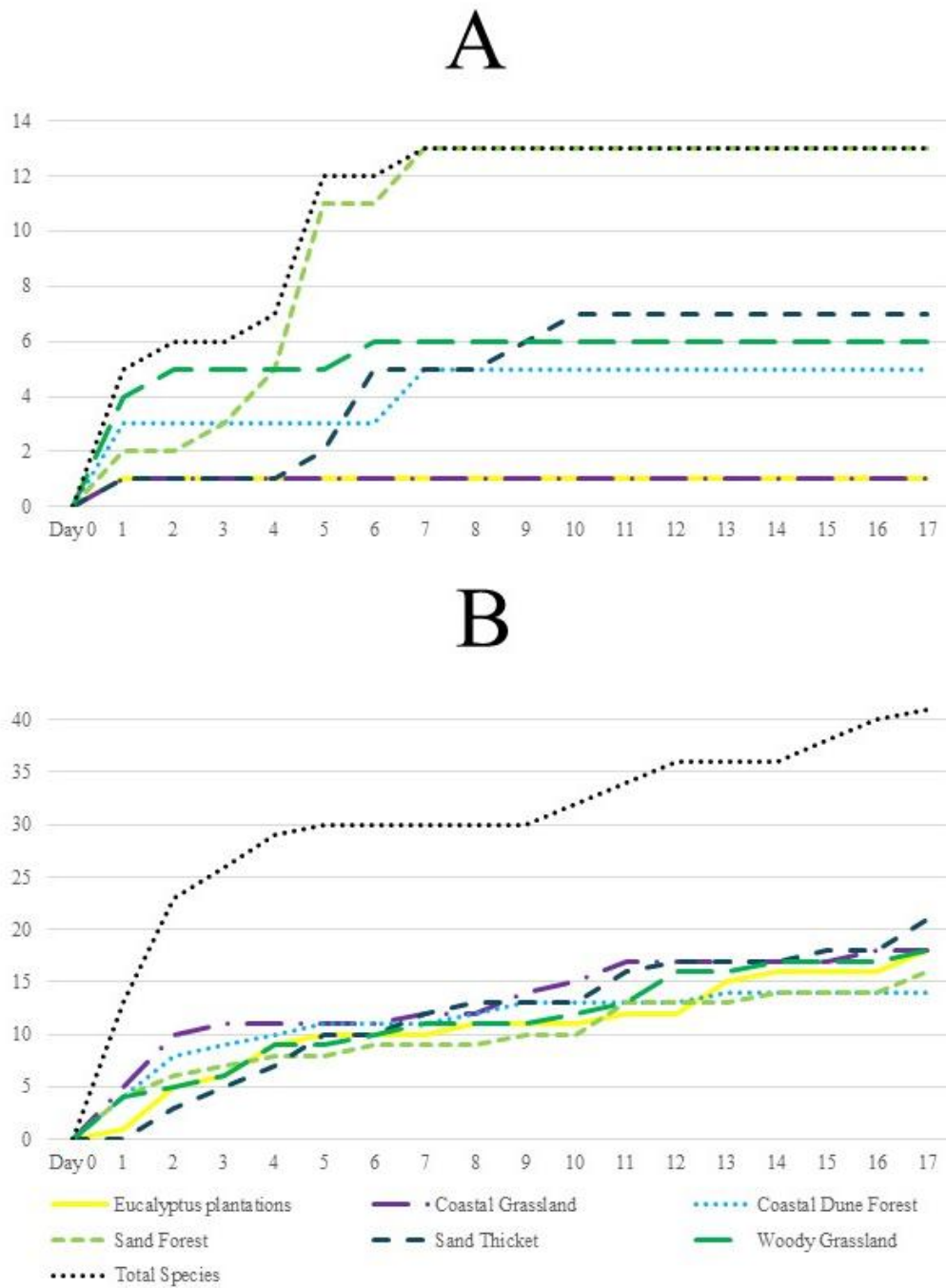


FIGURE S4. The species accumulation for amphibian (A) and reptile (B) species per active survey days for the Maputo National Park surveys.