

# HERPETOLOGICAL CONSERVATION AND BIOLOGY

27 September 2006

Volume 1, Number 1



Photograph by Stan Trauth

*The Western Slimy Salamander (Plethodon albagula) occurs in southern Missouri, Arkansas, Oklahoma and Texas. It is restricted to woodland habitats and is known to brood its clutch in caves and abandoned mines.*

## Departments

Editorials and Announcements.....	/
Invited Forums .....	1
HerpSpectives.....	9
Research Articles.....	16
Classics in HCB.....	68

## Special Points of Interest

Special Welcome to Your New Online Journal.....	/
The Importance of Long Term Studies.....	1
Why and When to Use New Scientific Names.....	6
<i>Aneides</i> in the Canopy of a Redwood Forest.....	16
A Classic Paper by Fred Cagle.....	68

ISSN: 1931-7603

Published in Partnership with:



# Herpetological Conservation and Biology

## Editorial Board

<p><b>Editor-in-Chief</b>  <b>R. Bruce Bury</b>          USGS Forest &amp; Range Ecosystem Science Center</p>	<p><b>Managing Editor</b>  <b>Malcolm L. McCallum</b>          Texas A&amp;M University-Texarkana</p>	<p><b>Special Sections Editor</b>  <b>Stanley E. Trauth</b>          Arkansas State University</p>	<p><b>Technical and Copy Editor</b>  <b>Raymond A. Saumure</b>          Las Vegas Springs Preserve</p>
<p><b><u>ASSOCIATE EDITORS</u></b></p> <p><b>David F Bradford</b>          USEPA, ORD          Landscape Ecology Branch</p> <p><b>Robert D. Brodman</b>          Saint Joseph's College</p> <p><b>Sean Doody</b>          University of Canberra</p> <p><b>David J. Germano</b>          California State University-Bakersfield</p> <p><b>Gregory A. Green</b>          Tetra Tech EC, Inc</p> <p><b>Kirk Lohman</b>          USGS Upper Midwest          Environmental Science Center</p> <p><b>Brian Miller</b>          Middle Tennessee State University</p> <p><b>Robert W. Murphy</b>          University of Toronto and          Royal Ontario Museum</p> <p><b>Erin Muths</b>          USGS Fort Collins Science Center</p> <p><b>Ted Papenfuss</b>          Museum of Vertebrate Zoology          University of California, Berkeley</p> <p><b>Klaus O. Richter</b>          Department of Natural Resources and Parks,          Seattle, Washington</p> <p><b>Leslie Rissler</b>          University of Alabama, Tuscaloosa</p> <p><b>Editorial Assistant</b>          Gwen W. Bury          Western Washington University</p> <p><b>Assistant Web Manager</b>          Robert Neal          Arkansas State University</p>	<p><b><u>ASSISTANT EDITORS</u></b></p> <p><b>Jeff Humphries</b>          Clemson University</p> <p><b>Matt Niemiller</b>          Middle Tennessee State University</p> <p><b>Sumio Okada</b>          Shimane University</p> <p><b>David Pike</b>          Environmental Services Group          Glatting Jackson, Inc.,</p> <p><b>Heath Rauschenberger</b>          US Fish and Wildlife Service          North Florida Ecological Services Field Office,</p> <p><b>Don B. Shepard</b>          University of Oklahoma</p> <p><b>Rick Scherer</b>          Colorado State University</p> <p><b>Brian Smith</b>          Black Hills State University</p> <p><b>Michael W. Tuma</b>          SWCA Environmental Consultants</p> <p><b>Benjamin A. Wheeler</b>          University of Arkansas          Community College at Batesville</p> <p style="text-align: center;"><b><u>STEERING COMMITTEE 2006</u></b></p> <p>Robert Brodman          Bruce Bury          Sean Doody          David Germano          Brian Miller          Malcolm McCallum          Ray Saumure          Brian Smith          Stan Trauth          Dick Vogt          Ben Wheeler</p>	<p><b><u>EDITORIAL GUILD</u></b></p> <p><b>Ray Ashton</b>          Ashton Biodiversity Research &amp;          Preservation Institute</p> <p><b>Sean Barry</b>          University of California-Davis</p> <p><b>Aaron M. Bauer</b>          Villanova University</p> <p><b>Val R. Beasley</b>          University of Illinois</p> <p><b>Stephen Dinkelacker</b>          University of Central Arkansas</p> <p><b>Mike Dreslik</b>          Illinois Natural History Survey</p> <p><b>Robert C. Drewes</b>          California Academy of Sciences</p> <p><b>C. Kenneth Dodd, Jr.</b>          USGS Florida Integrated Science Center</p> <p><b>Gary M. Fellers</b>          USGS Western Ecological Research Center</p> <p><b>Lee Fitzgerald</b>          Texas A&amp;M University</p> <p><b>J. Whitfield Gibbons</b>          University of Georgia's          Savannah River Ecology Lab</p> <p><b>David M. Green</b>          Redpath Museum, McGill University</p> <p><b>Patrick T. Gregory</b>          University of Victoria</p> <p><b>Tim R. Halliday</b>          The Open University</p> <p><b>Marc P. Hayes</b>          Washington Department of          Fish and Wildlife</p> <p><b>John Iverson</b>          Earlham College</p> <p><b>Roger A. Luckenbach</b>          Fresno City College</p> <p><b>Sharyn B. Marks</b>          Humboldt State University</p> <p><b>Roy McDiarmid</b>          USGS, Patuxent Wildlife Research Center          National Museum of Natural History</p> <p><b>Stephen McMann</b>          Williams Baptist College</p>	<p><b>Phil Medica</b>          USGS Las Vegas Field Station</p> <p><b>Walter Meshaka</b>          The State Museum of Pennsylvania</p> <p><b>Joe Mitchell</b>          University of Richmond</p> <p><b>Paul Moler</b>          Florida Fish and Wildlife          Conservation Commission</p> <p><b>Bruce Pauli</b>          Canadian Wildlife Service          National Wildlife Research Centre          Carleton University</p> <p><b>Ann V. Patterson</b>          Williams Baptist College</p> <p><b>Charles R. Peterson</b>          Idaho State University</p> <p><b>David Pilliod</b>          California Polytechnic State University-          San Luis Obispo</p> <p><b>Michael V. Plummer</b>          Harding University</p> <p><b>David M. Sever</b>          Southeastern Louisiana University</p> <p><b>Glenn R. Stewart</b>          California State University Polytechnic          University</p> <p><b>Oscar Flores Villela</b>          Universidad Nacional Autonoma de Mexico</p> <p><b>Richard C. Vogt</b>          Instituto Nacional de Pesquisas da Amazonia</p> <p><b>Susan C. Walls</b>          USGS/National Wetlands Research Center</p> <p><b>Tanya Wahbe</b>          University of British Columbia</p> <p><b>Richard Wassersug</b>          Dalhousie University</p> <p><b>Linda A. Weir</b>          USGS Patuxent Wildlife Research Center,</p> <p><b>Hartwell H. Welsh</b>          U. S. Forest Service, Pacific Southwest          Research Station,          Redwood Sciences Laboratory</p>

*Herpetological Conservation and Biology* (ISSN 1931-7603) is a peer reviewed open-access journal that is published at least quarterly in partnership with the World Herpetology Congress (<http://www.gu.edu.au/school/asc/WHCWeb/>) and Partners in Amphibian and Reptile Conservation (<http://www.parcplace.com>). HCB publishes original research, reviews, perspectives and correspondence on the life history ecology, management and conservation of amphibians and reptiles. Its focus demonstrates the importance of natural history to conservation efforts. Manuscripts, editorial correspondence and inquiries regarding print subscriptions should be sent electronically via email to the Managing Editor ([malcolm.mccallum@tamut.edu](mailto:malcolm.mccallum@tamut.edu)). Additional information may be obtained at: <http://www.herpconbio.org>. Copyright for all articles published in HCB are retained by the author/s with the agreement that future publication of HCB publications in other venues indicate that the manuscript was originally published in HCB and provide the original citation. Publication in HCB indicates the authors consent that copies of the article may be made beyond those permitted by Sections 107 or 108 of the U.S. Copyright Law provided that copies are made only for personal or internal use of specific clients. To request permission for other kinds of copying, such as for general distribution, for advertising or promotional purposes, for creating new collective works, or for resale, kindly contact the author/s of the manuscript in question. ©2006 Herpetological Conservation and biology. All rights reserved.

# HERPETOLOGICAL

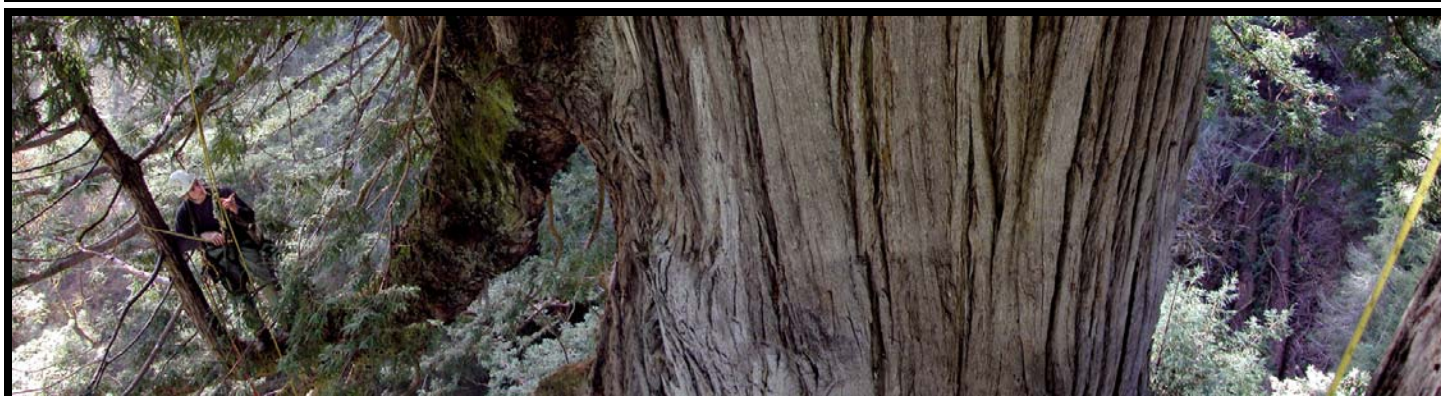
## CONSERVATION AND BIOLOGY

27 September 2006

Volume 1, Number 1

### Contents

<u>Editorials</u>	Dawning of <i>Herpetological Conservation and Biology</i> : A Special Welcome to Your New Online Journal <i>R. Bruce Bury, Malcolm L. McCallum, Stanley E. Trauth and Raymond A. Saumure</i> .....	<i>i</i>
<u>Invited Forums</u>	Ecological Succession on a Natural Area in Northeastern Kansas from 1948 to 2006 <i>Henry S. Fitch (Invited Contribution)</i> .....	1
	Dilemma of Name-Recognition: Why and When to Use New Combinations of Scientific Names <i>Hobart M. Smith and David Chiszar (Invited Contribution)</i> .....	6
<u>HerpSpectives</u>	Road Surveys for Turtles: Consideration of Possible Sampling Biases <i>David A. Steen and Lora L. Smith</i> .....	9
<u>Research Articles</u>	Evidence of a New Niche for a North American Salamander: <i>Aneides vagrans</i> Residing in Old-Growth Redwood Forest Canopy <i>James C. Spickler, Stephen C. Sillett, Sharyn B. Marks, and Hartwell H. Welsh, Jr.</i> .....	16
	Sexual Differences in the Ecology and Habitat Selection of Western Toads ( <i>Bufo boreas</i> ) in Northeastern Oregon <i>Evelyn L. Bull</i> .....	27
	Habitat Suitability for Reptiles in the Gorvan Sands Sanctuary, Armenia <i>Tigran L. Tadevosyan</i> .....	39
	Status and Geographic Expansion of the Mediterranean Gecko, <i>Hemidactylus turcicus</i> , in Louisiana: Implications for the southeastern United States <i>Walter E. Meshaka, Jr., Samuel D. Marshall, Jeff Boundy and Avery A. Williams</i> .....	45
	A Novel Facultative Mutualistic Relationship Between Bufonid Tadpoles and Flagellated Green Algae <i>Renn Tumlison and Stanley E. Trauth</i> .....	51
	Natural History, Field Ecology, Conservation Biology and Wildlife Management: Time to Connect the Dots <i>R. Bruce Bury</i> .....	56
	Publication Trends of Natural History and Field Studies in Herpetology <i>Malcolm L. McCallum and Jamie L. McCallum</i> .....	62
<u>Classics in HCB</u>	A Personal Glimpse into Natural History and a Revisit of a Classic Paper by Fred Cagle <i>Stanley E. Trauth</i> .....	68



**Inside this issue:** Observing amphibians and reptiles does not always involve turning rocks. Here, Steve Sillett examines a large limb in the crown of the largest known redwood in search of *Aneides vagrans*, Jedediah Smith Redwoods State Park, California. (Photographed by Marie Antoine, compliments of Steve Sillett).

Partner  
Organizations:

